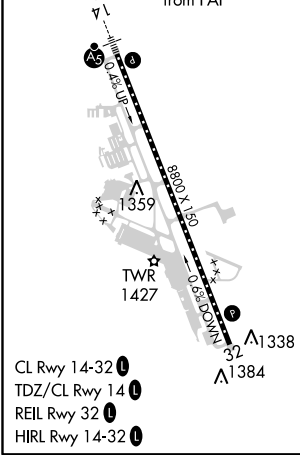
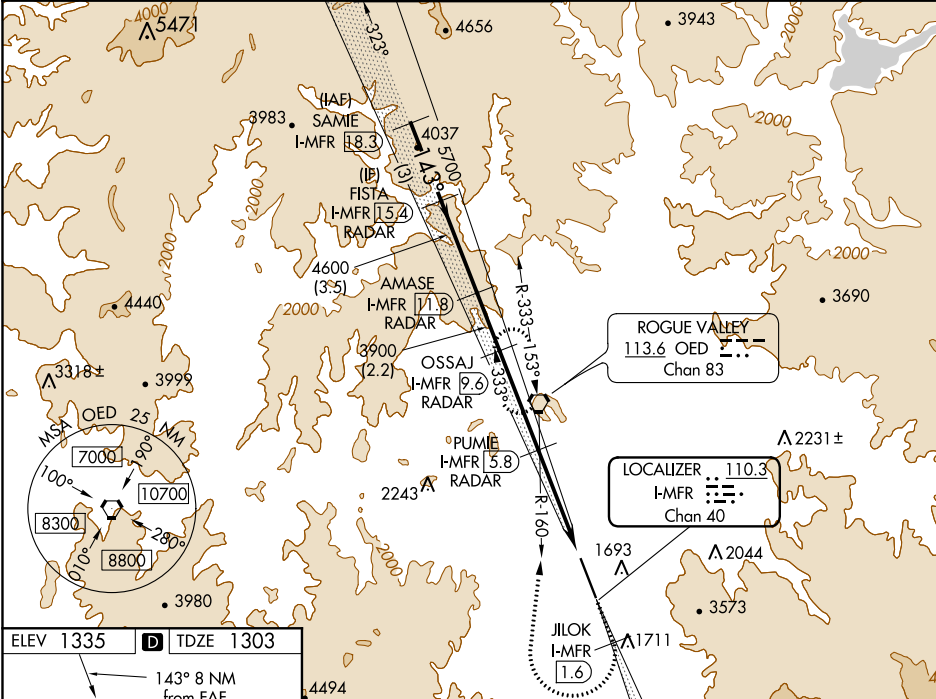


LOC/DME I-MFR	APP CRS	Rwy Idg	8800
110.3	143°	TDZE	1303
Chan 40		Apt Elev	1335

ILS or LOC RWY 14
ROGUE VALLEY INTL-MEDFORD (MF'R)

DME required. DME or RADAR required for procedure entry.		MALSR	MISSED APPROACH: Climb to 6600 on I-MFR SE course to JLOK/I-MFR 1.6 DME and climbing right turn on heading 350° and on OED VORTAC R-160 to OED VORTAC and hold, continue climb-in-hold to 6600. #Missed approach requires minimum climb of 331 feet per NM to 4100.	
Circling NA for Cats C and D northeast of Rwy 14-32. When Medford altimeter setting not received, procedure NA. For inop ALS, increase S-ILS 14 visibility to 1½ SM, increase S-LOC 14# Cats C and D visibility to RVR 5500, increase S-LOC 14 Cats C and D visibility to 2½ SM.		AS		
ATIS	CASCADE APP CON*	MEDFORD TOWER*	GND CON	UNICOM
127.25	124.3 379.9	119.4 (CTAF) 1257.8	121.8	122.95



VGSI and ILS glidepath not coincident (VGSI Angle 3.00/TCH 73).				
S-ILS 14# 1503/18 200 (200-½)				
S-ILS 14 1929-1½ 626 (600-1½)				
S-LOC 14# 1680/24 377 (400-½) 1680/35 377 (400-¾)				
S-LOC 14 2080/24 777 (800-½) 2080/40 777 (800-¾) 2080-1¾ 777 (800-1¾)				
CIRCLING 2080-1 745 (800-1) 2080-1¼ 745 (800-1¼) 2080-2½ 745 (800-2½) 2340-3 1005 (1100-3)				

NW-1, 03 DEC 2020 to 31 DEC 2020

NW-1, 03 DEC 2020 to 31 DEC 2020