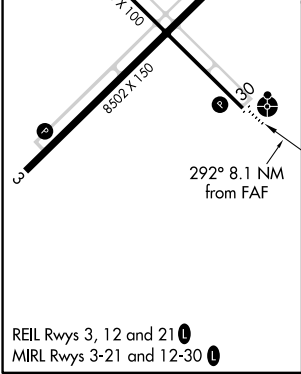
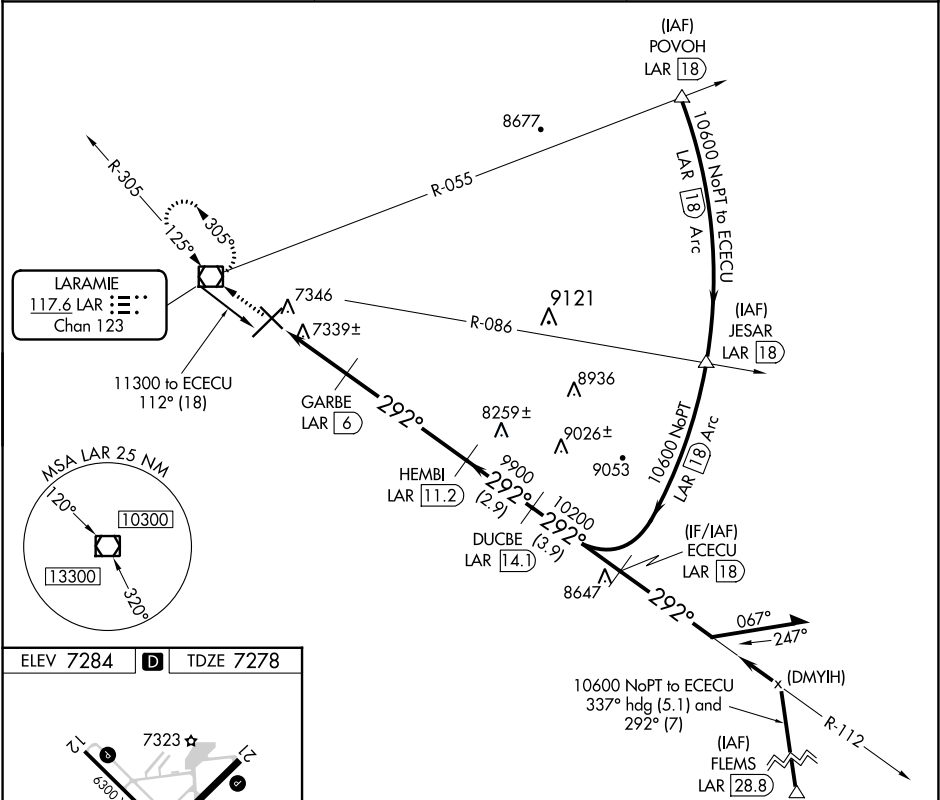


VOR/DME LAR 117.6 Chan 123	APP CRS 292°	Rwy Idg TDZE Apt Elev	6300 7278 7284
--	------------------------	-----------------------------	---

VOR/DME RWY 30
LARAMIE RGNL (LAR)

 -35°C	ODALS 	MISSED APPROACH: Climb to 9600 direct LAR VOR/DME and hold, continue climb-in-hold to 9600.
-----------	-----------	---

ASOS 135.475	DENVER CENTER 125.9 284.7	UNICOM 123.05 (CTAF) 0
------------------------	-------------------------------------	----------------------------------



9600	LAR	ECECU LAR 18	Remain within 10 NM
10600 NoPT to ECECU 337° hdg (5.1) and 292° (7)			
10600	HEMBI LAR 11.2	DUCBE LAR 14.1	
10200	GARBE LAR 6		
9900	LAR 4		
8220	LAR 3.1		
0.9	2 NM	5.2 NM	2.9 NM
3.9 NM			
CATEGORY	A	B	C
S-30	7600-3/4	322 (400-3/4)	7600-1
CIRCLING	7660-1	7740-1	7740-1 1/2
	376 (400-1)	456 (500-1)	456 (500-1 1/2)
			7840-2
			556 (600-2)

NW-1, 03 DEC 2020 to 31 DEC 2020

NW-1, 03 DEC 2020 to 31 DEC 2020