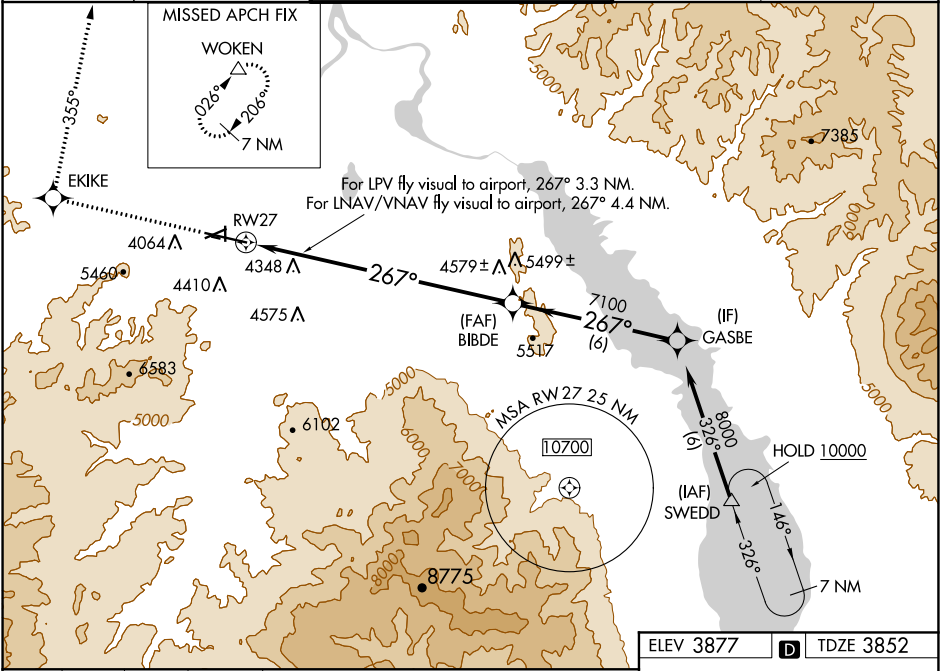


WAAS CH <b>69405</b> <b>W27A</b>	APP CRS <b>267°</b>	Rwy Idg TDZE Apt Elev <b>9000</b> <b>3852</b> <b>3877</b>
--	------------------------	--

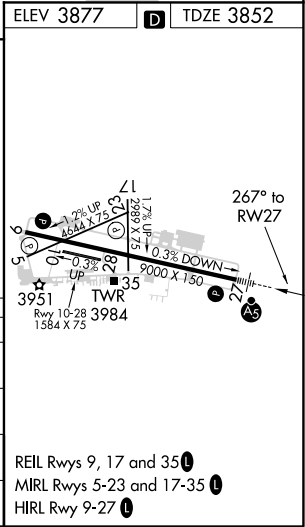
**RNAV (GPS) X RWY 27**  
HELENA RGNL (HLN)

 Circling NA for Cat D south of Rwy 9-27. For uncompensated Baro-VNAV systems, LNAV/VNAV NA below -22°C (-7°F) or above 42°C (107°F). DME/DME RNP- 0.3 NA. Inoperative table does not apply to LNAV Cats A-B. Circling to Rwy 5, 23, 35 NA at night.	 MALSR	MISSED APPROACH: Climb to 9300 direct EKIKE and on track 355° to WOKEN and hold, continue climb-in-hold to 9300.
---	-----------	--

ATIS <b>120.4</b>	HELENA APP CON ★ <b>119.5 229.4</b>	HELENA TOWER ★ <b>118.3 (CTAF) 257.8</b>	GND CON <b>121.9</b>	UNICOM <b>122.95</b>
----------------------	--	---	-------------------------	-------------------------



9300 ↑	EKIKE ✱	tr 355°	WOKEN △	Procedure Turn NA			
LPV, fly visual, 267° 3.3 NM. LNAV/VNAV, fly visual 267° 4.4 NM.				BIBDE 7100			
RW27				8000			
*4.8 NM to RW27				267°			
*LNAV only				7100			
4.8 NM				5 NM		6 NM	
GP 3.00° TCH 55							
CATEGORY	A		B		C		D
LPV DA	4965-2 1113 (1100-2)				4965-3 1113 (1100-3)		
LNAV/VNAV DA	5289-2 1437 (1500-2)				5289-3 1437 (1500-3)		
LNAV MDA	5440-1¼ 1588 (1600-1¼)	5440-1½ 1588 (1600-1½)			5440-2½ 1588 (1600-2½)		
CIRCLING	5440-1¼ 1563 (1600-1¼)	5440-1½ 1563 (1600-1½)			5920-3 2043 (2100-3)		



NW-1, 03 DEC 2020 to 31 DEC 2020

NW-1, 03 DEC 2020 to 31 DEC 2020