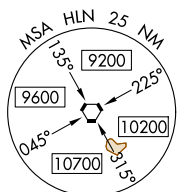


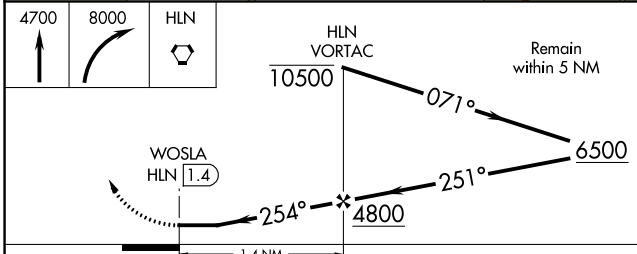
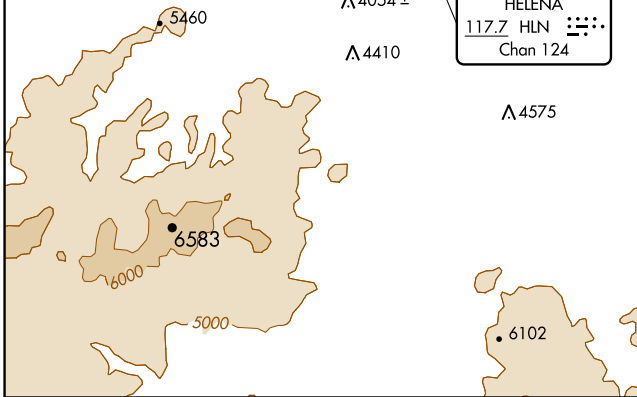
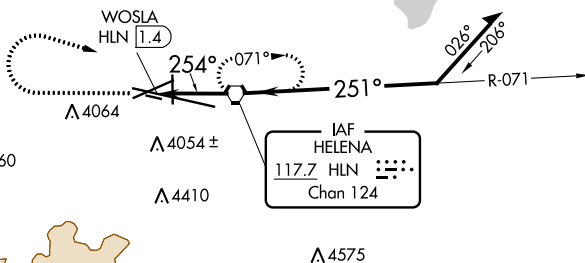
COPTER VOR 254°
HELENA RGNL (HLN)

MISSED APPROACH: Climb to 4700 then climbing right turn to 8000 direct HLN VORTAC and hold, continue climb-in-hold to 8000.

ATIS 120.4	HELENA APP CON ★ 119.5 229.4	HELENA TOWER ★ 118.3 (CTAF) 0 257.8	GND CON 121.9	UNICOM 122.95
----------------------	--	---	-------------------------	-------------------------



NOTE: Designated landing area at WOSLA; intersection of Rwy 9-27 and Taxiway G.
NOTE: Limit final and missed approach to 90K.
NOTE: 800 foot descent gradient may be required for PT outbound.
NOTE: 675 foot descent gradient required for final approach.



CATEGORY	COPTER	FAF to MAP 1.4 NM					
H-254	4320-½ 474 (500-½)	Knots	45	60	75	90	105
		Min:Sec	1:53	1:24	1:07	:57	:48

