

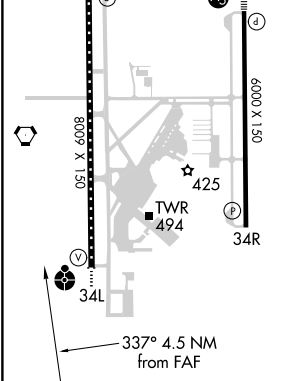
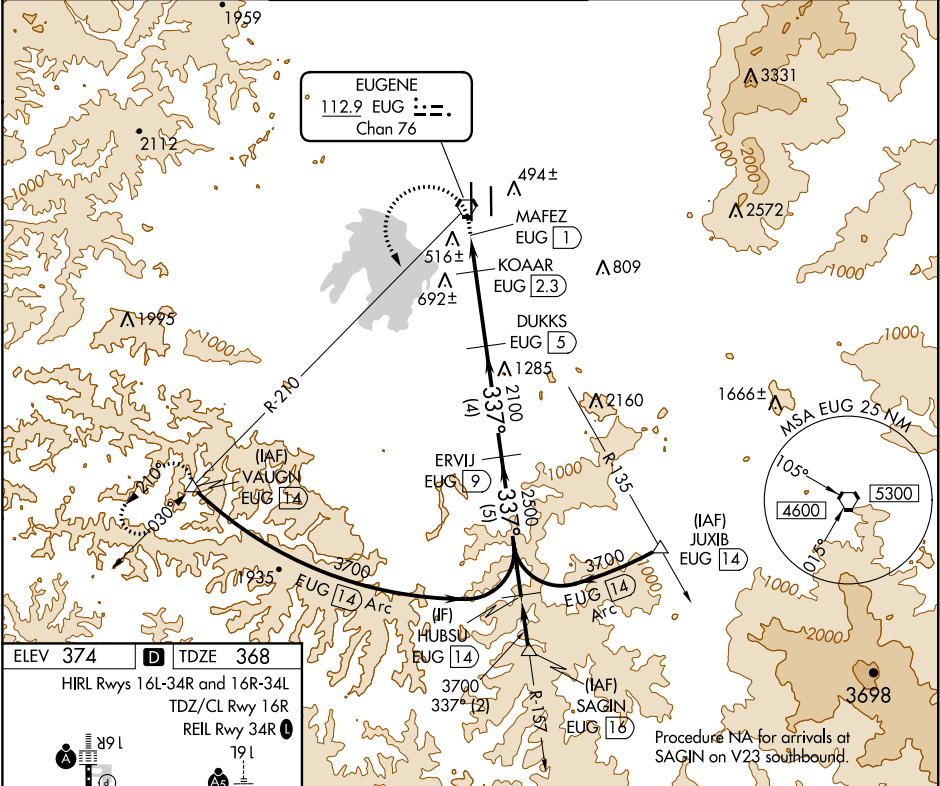
VORTAC EUG	APP CRS	Rwy Idg	8009
112.9	337°	TDZE	368
Chan 76		Apt Elev	374

VOR or TACAN RWY 34L

MAHLON SWEET FIELD (EUG)

DME required for procedure entry. DME required.		ODALS	MISSED APPROACH: Climb to 800 then climbing left turn to 4100 on EUG VORTAC R-210 to VAUGN/EUG 14 DME and hold, continue climb-in-hold to 4100.	

ATIS	CASCADE APP CON★	EUGENE TOWER★	GND CON	CLNC DEL	UNICOM
125.225	119.6 348.7	118.9 (CTAF) 371.9 (Rwy 16R/34L) 124.15 371.9 (Rwy 16L/34R)	121.7 269.5	121.7 269.5	122.95



800	4100	VAUGN	VGSI and descent angles not coincident (VGSI Angle 3.00/TCH 53).		HUBSU EUG 14
EUG R-210					
EUG VORTAC	MAFEZ EUG 1	KOAAR EUG 2.3	DUKKS EUG 5	ERVIJ EUG 9	
			3.49° TCH 53		
			1100	2100	3700
			2500		
			2.7 NM	4 NM	5 NM
CATEGORY	A	B	C	D	
S-34L	780/40	412 (500-¾)	780/55	412 (500-1)	
CIRCLING	820-1 446 (500-1)	840-1 466 (500-1)	1000-1¾ 626 (700-1¾)	1140-2½ 766 (800-2½)	

NW-1, 03 DEC 2020 to 31 DEC 2020

NW-1, 03 DEC 2020 to 31 DEC 2020