

WAAS CH 8651B W16B	APP CRS 164°	Rwy Idg TDZE Apt Elev	8009 364 374
--	------------------------	-----------------------------	---

RNAV (GPS) Y RWY 16R
MAHLON SWEET FIELD (EUG)

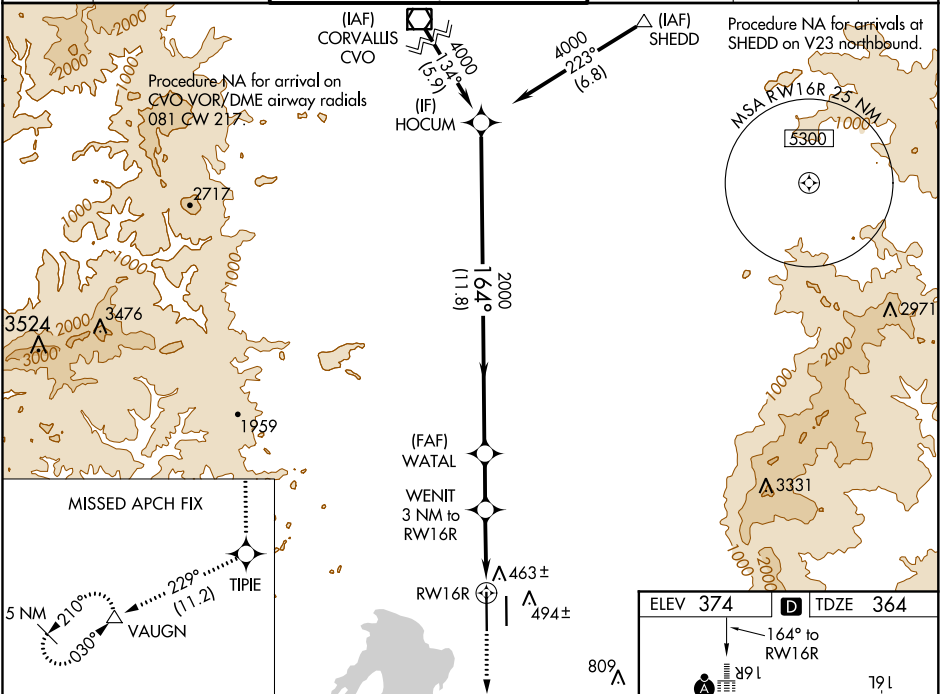
RNP APCH.

Simultaneous approach authorized. LNAV procedure NA during simultaneous operations. Use of FD or AP providing RNAV track guidance required during simultaneous operations. For uncompensated Baro-VNAV systems, LNAV/VNAV NA below -10°C or above 54°C. For inop ALS, increase LNAV/VNAV all Cats visibility to RVR 4500, increase LNAV Cat C/D visibility to RVR 5500.

ALSF-2

MISSED APPROACH: Climb to 5000 direct TIPIE and on track 229° to VAUGN and hold, continue climb-in-hold to 5000.

ATIS 125.225	CASCADE APP CON ★ 119.6 348.7	EUGENE TOWER ★ 118.9 (CTAF) 371.9 (Rwy 16R/34L) 124.15 371.9 (Rwy 16L/34R)	GND CON 121.7 269.5	CLNC DEL 121.7 269.5	UNICOM 122.95
------------------------	---	---	-------------------------------	--------------------------------	-------------------------



HOCUM				WATAL		5000 ↑	TIPIE ✦	tr 229°	VAUGN △
4000		164°		2000		WENIT 3 NM to RW16R		*1 NM to RW16R *LNAV only	
GP 3.00° TCH 51		2000		*1360		RW16R		1 NM	
11.8 NM		2 NM		2 NM		1 NM			
CATEGORY	A		B		C		D		
LPV DA	564/18		200 (200-½)						
LNAV/ VNAV DA	628/24		264 (300-½)						
LNAV MDA	720/24 356 (400-½)		720/30 356 (400-¾)						
CIRCLING	820-1 446 (500-1)		840-1 466 (500-1)		1000-1¾ 626 (700-1¾)		1140-2½ 766 (800-2½)		

