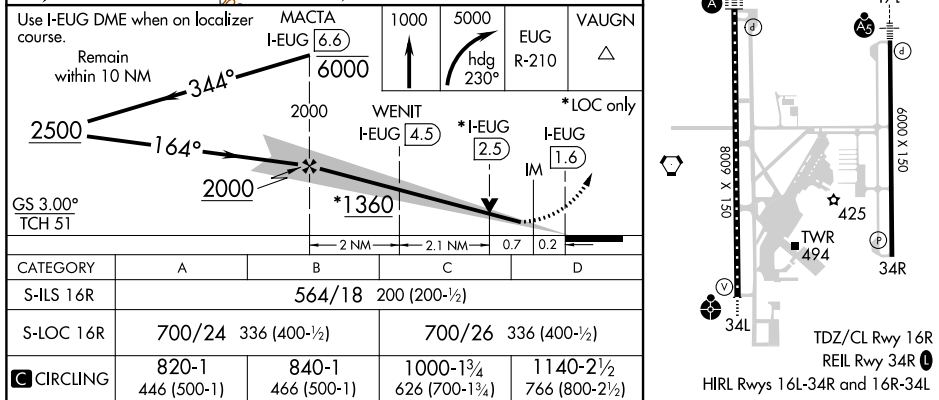




MISSED APPROACH: Climb to 1000 then climbing right turn to 5000 on heading 230° and on EUG VORTAC R-210 to VAUGN/EUG 14 DME and hold, continue climb-in-hold to 5000.

Procedure NA for arrivals on CVO VOR/DME
airway radials 081 CW 177.



MAHLON SWEET FIELD (EUG)
ILS or LOC RWY 16R

NW-1, 03 DEC 2020 to 31 DEC 2020