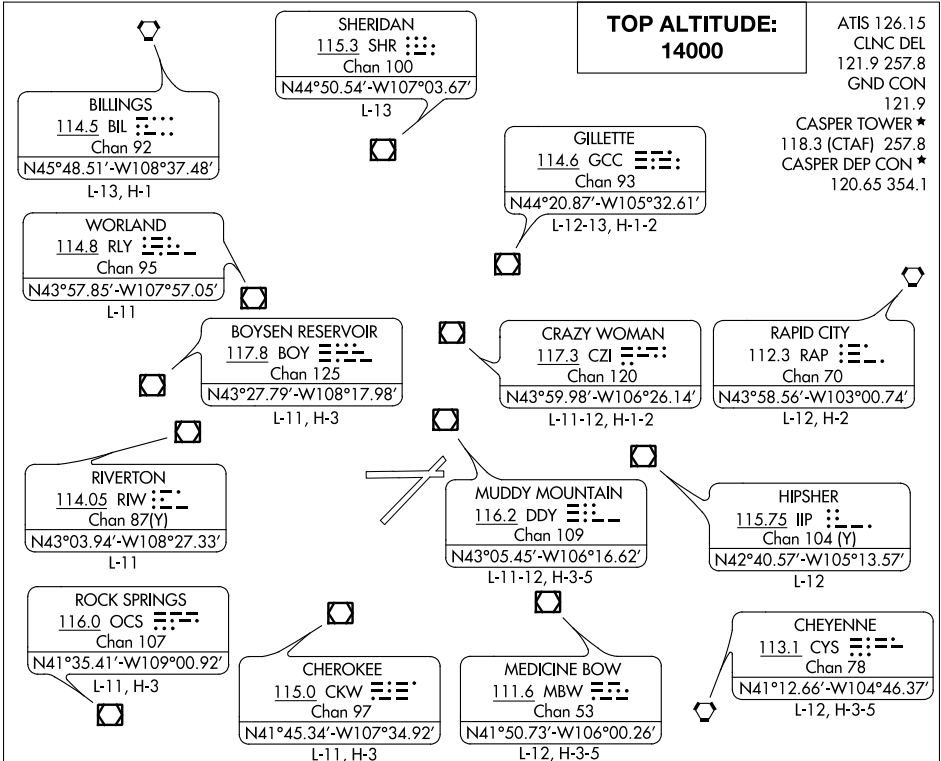


CASPER THREE DEPARTURE

CASPER/NATRONA COUNTY INTL (CPR)  
CASPER, WYOMING



TAKE-OFF MINIMUMS

- Rwy 12, 17, 30, 35, NA- Environmental.
- Rwy 3, 8, 26, Standard.
- Rwy 21, Standard with a minimum climb of 235 feet per NM to 6700.

NOTE: RADAR required.

NOTE: Chart not to scale.

DEPARTURE ROUTE DESCRIPTION

- TAKE-OFF RUNWAY 3:** Climb on a heading between 212° CW 094° from DER as assigned by ATC thence . . .
- TAKE-OFF RUNWAY 8:** Climb on a heading between 257° CW 094° from DER as assigned by ATC thence . . .
- TAKE-OFF RUNWAY 21:** Climb on a heading between 195° CW 032° from DER as assigned by ATC thence . . .
- TAKE-OFF RUNWAY 26:** Climb on a heading between 190° CW 077° from DER as assigned by ATC thence . . .

. . . Maintain 14000' or assigned lower altitude. Expect RADAR vectors to filed/assigned fix/route. Expect further clearance to filed altitude ten minutes after departure.

LOST COMMUNICATIONS

If no transmissions are received for one minute after departure, maintain assigned heading until 7,000 feet, then climb to filed altitude via direct DDY VOR/DME, then via assigned route. Runways 3 and 8 turn left to DDY VOR/DME, runways 21 and 26 turn right to DDY VOR/DME.

CASPER THREE DEPARTURE

CASPER, WYOMING  
CASPER/NATRONA COUNTY INTL (CPR)

NW-1, 03 DEC 2020 to 31 DEC 2020

NW-1, 03 DEC 2020 to 31 DEC 2020