

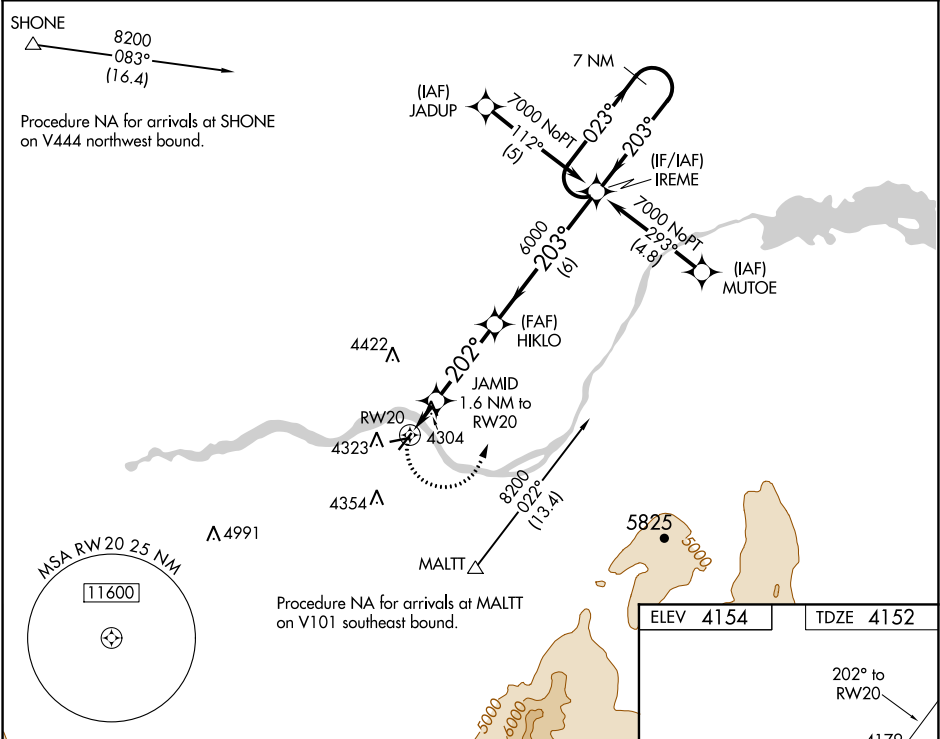
APP CRS	Rwy Idg	3787
202°	TDZE	4152
	Apt Elev	4154

RNAV (GPS) RWY 20
BURLEY MUNI (BYI)

⚠ DME/DME RNP-0.3 NA. When local altimeter setting not received, use Twin Falls altimeter setting and increase all MDA 80 feet. Procedure NA at night. Helicopter visibility reduction below 1 SM not authorized.

MISSED APPROACH: Climbing left turn to 7000 direct IREME and hold.

ASOS 135.575	TWIN FALLS APP CON ★ 126.7 353.75	CTAF 122.9 0 ★
-----------------	--------------------------------------	-------------------



7000 IREME

VGSI and descent angles not coincident (VGSI Angle 3.00/TCH 37).

7 NM Holding Pattern

JAMID 1.6 NM to RW20

HIKLO

IREME

7000

203°

023°

203°

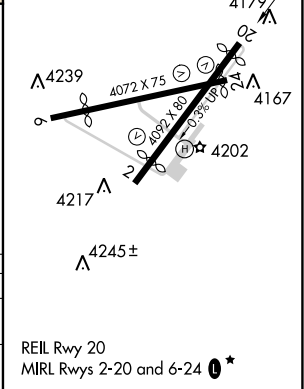
4800

6000

3.75° TCH 40

1.6 NM 3.4 NM 6 NM

CATEGORY	A	B	C	D
RNAV MDA	4560-1	408 (500-1)	4560-1¼ 408 (500-1¼)	NA
CIRCLING	4660-1	506 (600-1)	4740-1½ 586 (600-1½)	NA



NW-1, 03 DEC 2020 to 31 DEC 2020

NW-1, 03 DEC 2020 to 31 DEC 2020