

VOR/DME BZN	APP CRS	Rwy Idg	8994
112.4	104°	TDZE	4443
Chan 71		Apt Elev	4473

VOR RWY 12
BOZEMAN YELLOWSTONE INTL (BZN)

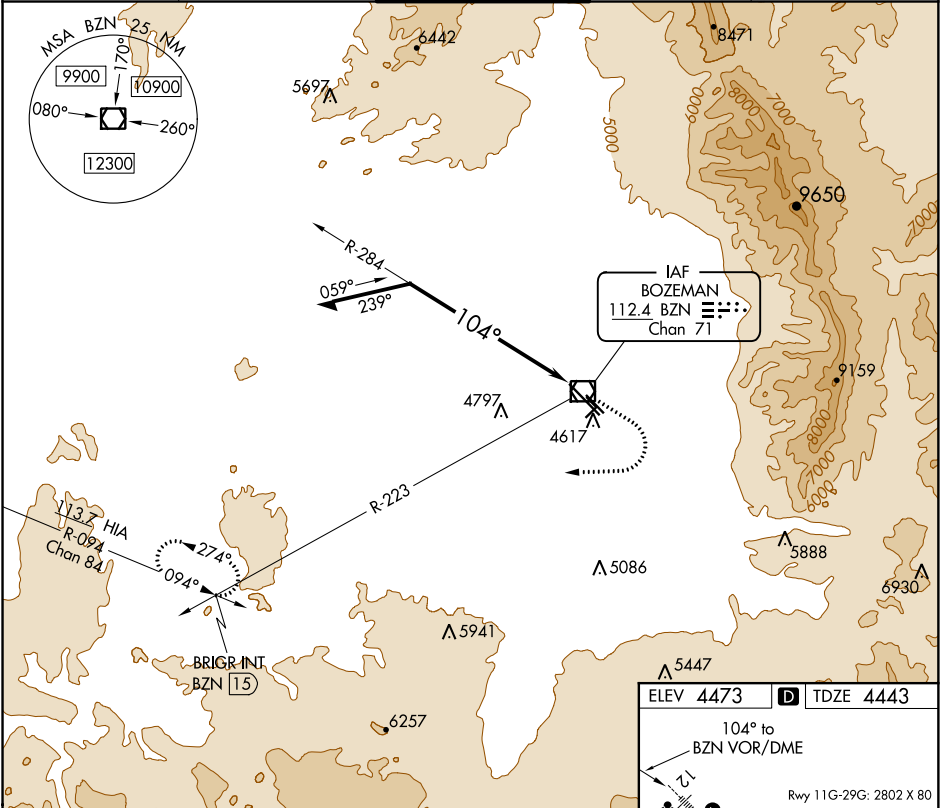
V
Circling NA to Rwys 3-21 and 11-29.
Inop table does not apply.

M
-31°C

MALSR

MISSED APPROACH: Climb to 5500 then climbing right turn to 8000 on heading 250° and BZN VOR/DME R-223 to BRIGR INT/15 DME and hold.

ATIS 135.425	BIG SKY APP CON★ 118.975 226.675	BOZEMAN TOWER★ 118.2 (CTAF) 0	GND CON 121.8	UNICOM 122.95
-----------------	-------------------------------------	----------------------------------	------------------	------------------



Remain within 10 NM

6700

284°

104°

BZN VOR/DME

10000

8000

BZN R-223

BRIGR INT

5500

8000

hdg 250°

BZN R-223

BRIGR INT

CATEGORY	A	B	C	D
S-12	5440-1¼ 997 (1000-1¼)	5440-1½ 997 (1000-1½)	5440-3	997 (1000-3)
CIRCLING	5440-1¼ 967 (1000-1¼)	5440-1½ 967 (1000-1½)	5440-3	967 (1000-3)

ELEV 4473

TDZE 4443

104° to BZN VOR/DME

Rwy 11G-29G: 2802 X 80

0.5% UP

0.4% UP

0.3% UP

0.2% DOWN

0.1% DOWN

0.0% DOWN

0.1% DOWN

0.2% DOWN

0.3% DOWN

0.4% DOWN

0.5% DOWN

TWR

REIL Rwy 30

HIRL Rwy 12-30

MIRL Rwy 11-29

NW-1, 03 DEC 2020 to 31 DEC 2020

NW-1, 03 DEC 2020 to 31 DEC 2020