

WAAS CH 77702 W28A	APP CRS 282°	Rwy Idg TDZE Apt Elev	9763 2858 2871
--	------------------------	-----------------------------	---

RNAV (GPS) Y RWY 28L

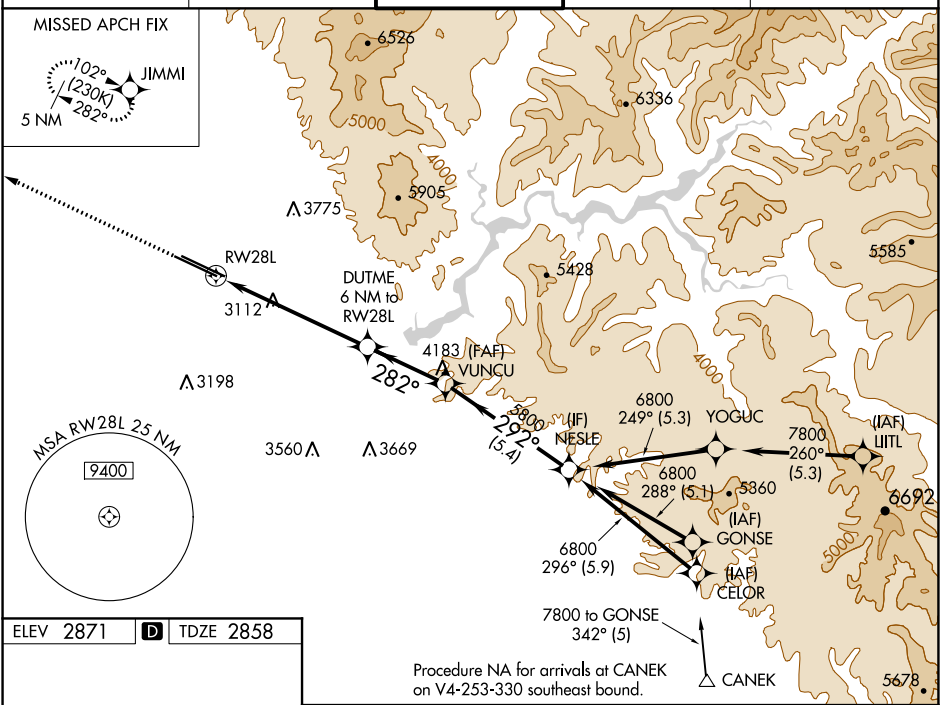
BOISE AIR TERMINAL/GOWEN FIELD (BOI)

⚠ For uncompensated Baro-VNAV systems, LNAV/VNAV NA below -12°C (11°F) or above 52°C (126°F). Circling NA north of Rwy 10L-28R. DME/DME RNP-0.3 NA. For inop ALS, increase LPV all Cats visibility to RVR 5000, LNAV/VNAV Cat E visibility to 1½ SM, and LNAV Cat C/D/E visibility to 1¼ SM.

MALSR

MISSED APPROACH: Climb to 6000 direct JIMMI and hold, continue climb-in-hold to 6000.

D-ATIS 123.9 290.4	BIG SKY APP CON 119.6 269.4	BOISE TOWER 118.1 257.8	GND CON 121.7 348.6	CLNC DEL 125.9 323.2
------------------------------	---------------------------------------	--	-------------------------------	--------------------------------



REIL Rwy 10L
TDZ/CL Rwy 10R and 28L
HIRL Rwy 10L-28R and 10R-28L

6000 JIMMI

*LNAV only

1.8 NM 4.2 NM 3.1 NM 5.4 NM

GP 3.00° TCH 50

CATEGORY	A	B	C	D	E
LPV DA	3183/30 325 (400-½%)				
LNAV/VNAV DA	3274/45 416 (500-¾%)				
LNAV MDA	3480-24 622 (700-½%)		3480-1½ 622 (700-1%)		
C CIRCLING	3480-1 609 (700-1)		3740-2½ 869 (900-2½)	3820-3 949 (1000-3)	3880-3 1009 (1100-3)

NW-1, 03 DEC 2020 to 31 DEC 2020

NW-1, 03 DEC 2020 to 31 DEC 2020