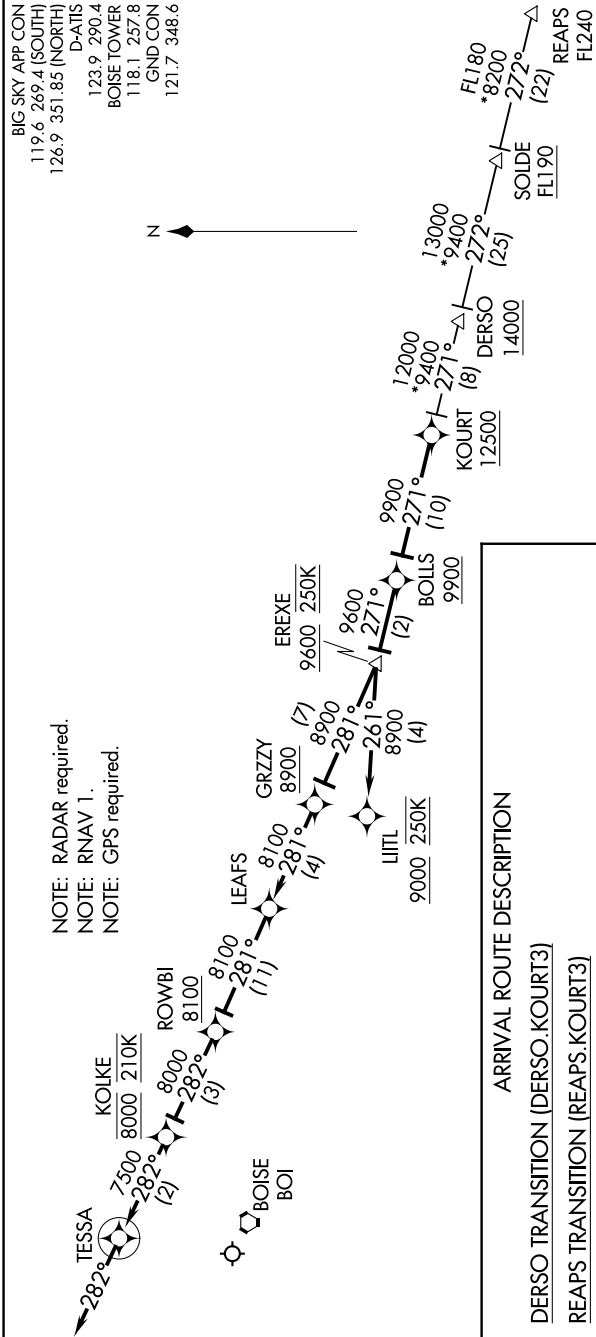


NW-1, 03 DEC 2020 to 31 DEC 2020



NOTE: Chart not to scale.

ARRIVAL ROUTE DESCRIPTION

**DERSO TRANSITION (DERSO.KOURT3)**  
**REAPS TRANSITION (REAPS.KOURT3)**

From KOURT on track 271° to cross BOLLS at/above 9900, then on track 271° to cross EREXE at/above 9600 and at 250K.

**LANDING RUNWAYS 10L/R:** From EREXE on track 281° to cross GRZZY at/above 8900, then on track 281° to LEAFS, then on track 281° to cross ROWBI at/above 8100, then on track 282° to cross KOIKE at 8000 and at 210K, then on track 282° to TESSA, then on track 282°. Expect assigned approach or RADAR vectors to final approach course.

**LANDING RUNWAYS 28L/R:** From EREXE on track 261° to cross LITL at/above 9000 and at 250K. Expect assigned approach or RADAR vectors to final approach course.

NW-1, 03 DEC 2020 to 31 DEC 2020