

LOC/DME I-BOI	APP CRS	Rwy ldg	9763
111.1	102°	TDZE	2836
Chan 48		Apt Elev	2871

ILS Y RWY 10R (SA CAT I)
BOISE AIR TERMINAL/GOWEN FIELD (BOI)

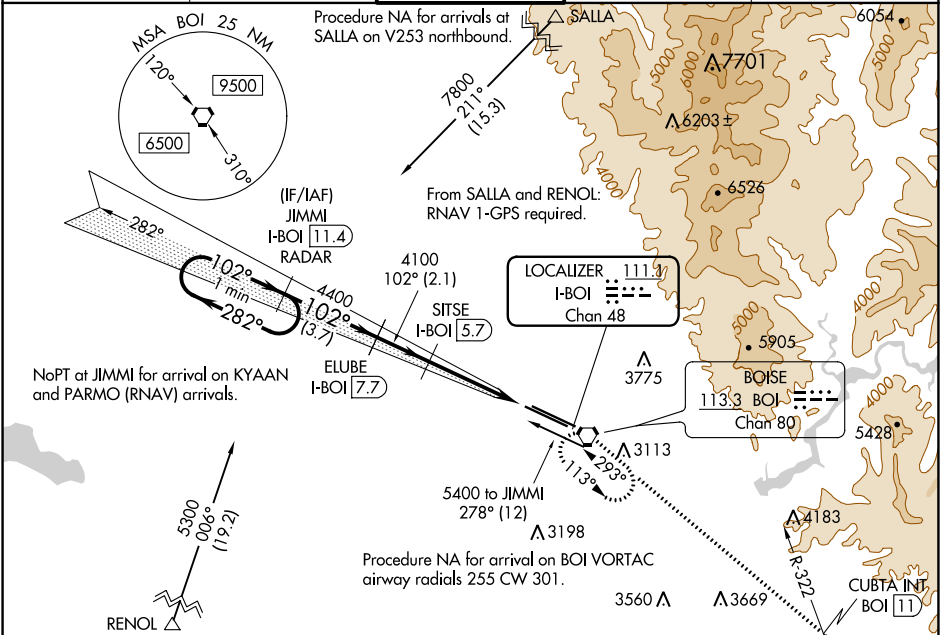
V

DME required.
Requires specific OPSPEC, MSPEC, or
LOA approval and use of HUD to DH.

ALSF-2
Rwy 10R

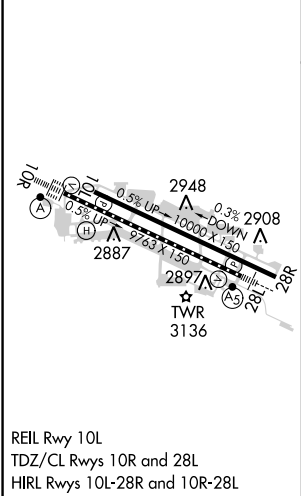
MISSED APPROACH: Climb to 6000 on BOI VORTAC
R-113 to CUBTA INT/BOI VORTAC 11 DME and right
turn direct BOI VORTAC and hold.

D-ATIS	BIG SKY APP CON	BOISE TOWER	GND CON	CLNC DEL
123.9 290.4	119.6 269.4	118.1 257.8	121.7 348.6	125.9 323.2



ELEV 2871	D	TDZE 2836
-----------	----------	-----------

RADAR or DME REQUIRED



VGSi and descent angles not coincident (VGSi Angle 3.00/TCH 64).			
One Minute Holding Pattern	JIMMI I-BOI 11.4 RADAR	ELUBE I-BOI 7.7	SITSE I-BOI 5.7
5000	282°	102°	102°
GS 3.00° TCH 58	3.7 NM	2.1 NM	3.8 NM
CATEGORY	A	B	C
S-ILS 10R	RA 170/14 150 DA 2986		

SA CATEGORY I ILS - SPECIAL AIRCREW
& AIRCRAFT CERTIFICATION REQUIRED

BOISE, IDAHO
Amdt 13 29MAR18

BOISE AIR TERMINAL/GOWEN FIELD (BOI)
43°34'N-116°13'W
ILS Y RWY 10R (SA CAT I)

NW-1, 03 DEC 2020 to 31 DEC 2020

NW-1, 03 DEC 2020 to 31 DEC 2020