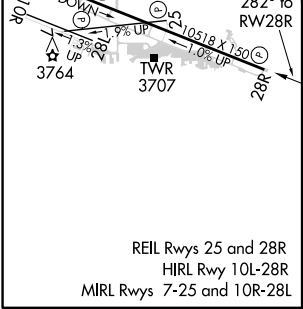
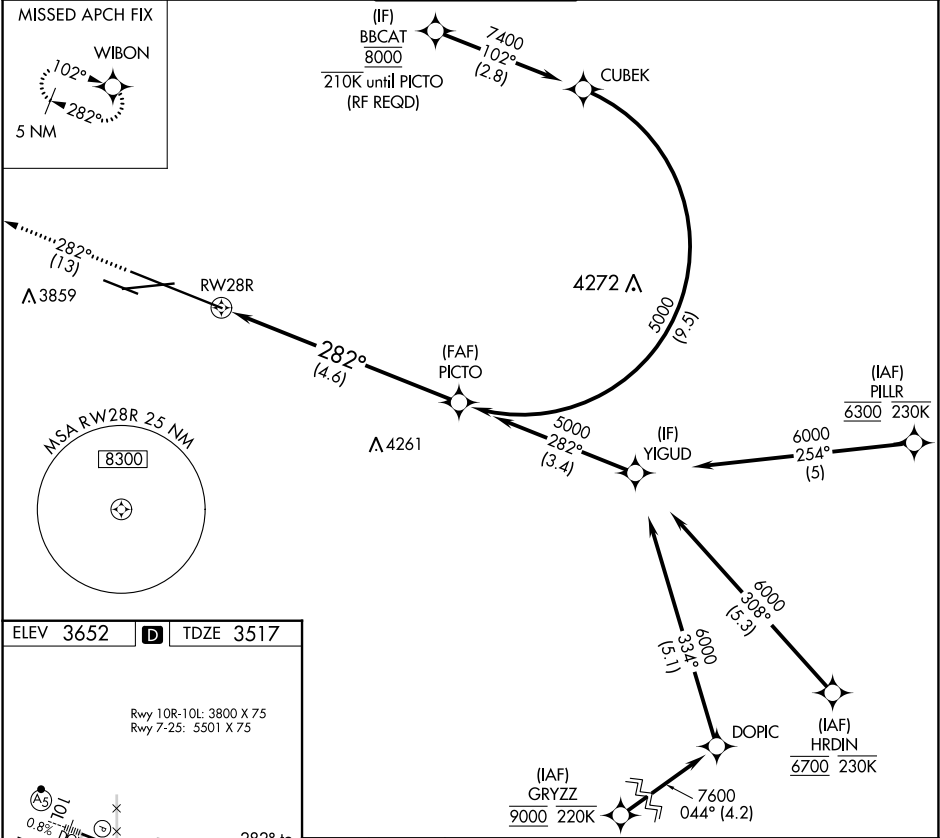


APP CRS	Rwy Idg	10518
282°	TDZE	3517
	Apt Elev	3652

RNAV (RNP) Z RWY 28R
BILLINGS LOGAN INTL (BIL)

RNP AR APCH.		MISSED APPROACH: Climb to 5900 on track 282° to WIBON and hold.		
▼ For uncompensated Baro-VNAV systems, procedure NA below -24°C (-11°F) or above 50°C (123°F). GPS required.				

ATIS 126.3	BILLINGS APP CON 120.5 284.6	BILLINGS TOWER 127.2 257.8	GND CON 121.9	CLNC DEL 121.9
---------------	---------------------------------	-------------------------------	------------------	-------------------



See planview for multiple IF locations.			
5900	WIBON	5000	PICTO
RW28R			
GP 3.00° TCH 56			
4.6 NM			
CATEGORY	A	B	C
RNP 0.30 DA	3903-1¼ 386 (300-1¼)		