

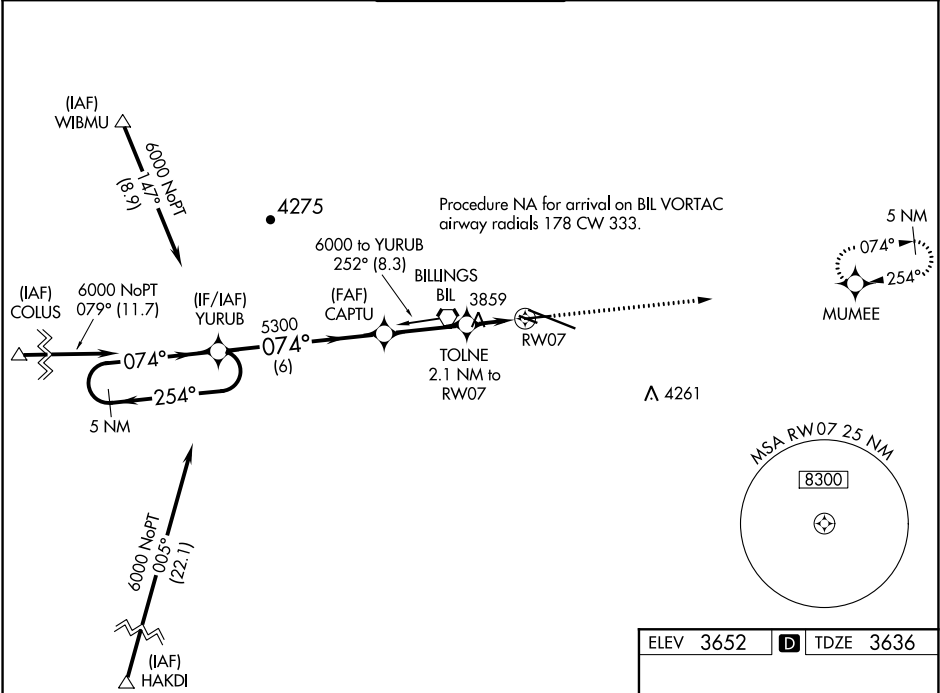
WAAS CH <b>87127</b> <b>W07A</b>	APP CRS <b>074°</b>	Rwy Idg TDZE Apt Elev	<b>5501</b> <b>3636</b> <b>3652</b>
--	------------------------	-----------------------------	---

**RNAV (GPS) RWY 7**  
BILLINGS LOGAN INTL (BIL)

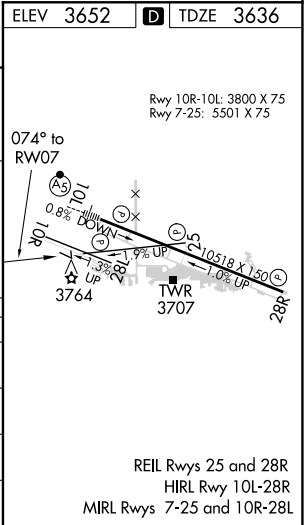
**⚠** For uncompensated Baro-VNAV systems, LNAV/VNAV NA below -25°C (-13°F) or above 53°C (127°F). Rwy 7 helicopter visibility reduction below ¾ SM NA. DME/DME RNP-0.3 NA.

MISSED APPROACH: Climb to 6000 direct MUMEE and hold.

ATIS <b>126.3</b>	BILLINGS APP CON <b>120.5 284.6</b>	<b>BILLINGS TOWER</b> <b>127.2 257.8</b>	GND CON <b>121.9</b>	CLNC DEL <b>121.9</b>
----------------------	--	---	-------------------------	--------------------------



VGSI and RNAV glidepath not coincident (VGSI Angle 3.00/TCH 31).				
5 NM Holding Pattern				
6000 ← 254° 074° →				
GP 3.00° TCH 45				
YURUB CAPTU TOLNE RW07				
5300 5300 5300				
6 NM 3 NM 0.7 NM 1.4 NM				
*4340				
*LNAV only				
CATEGORY	A	B	C	D
LPV DA	3886-¾ 250 (300-¾)			
LNAV/VNAV DA	3950-1 314 (300-1)			
LNAV MDA	4120-1	484 (500-1)	4120-1¾	484 (500-1¾)
CIRCLING	4120-1 468 (500-1)	4160-1 508 (600-1)	4180-1½ 528 (600-1½)	4580-3 928 (1000-3)



NW-1, 03 DEC 2020 to 31 DEC 2020

NW-1, 03 DEC 2020 to 31 DEC 2020