




VOR/DME BKE <u>115.3</u> Chan 100	APP CRS 118°	Rwy Idg 5085 TDZE 3370 Apt Elev 3373
-------------------------------------------------------	------------------------	-----------------------------------------------------------------

VOR/DME RWY 13
BAKER CITY MUNI (BKE)



 -23°C

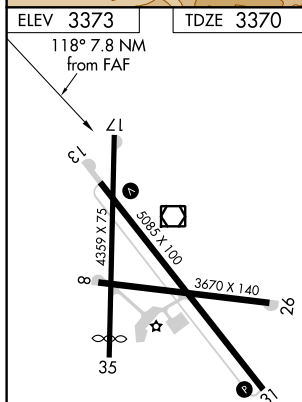
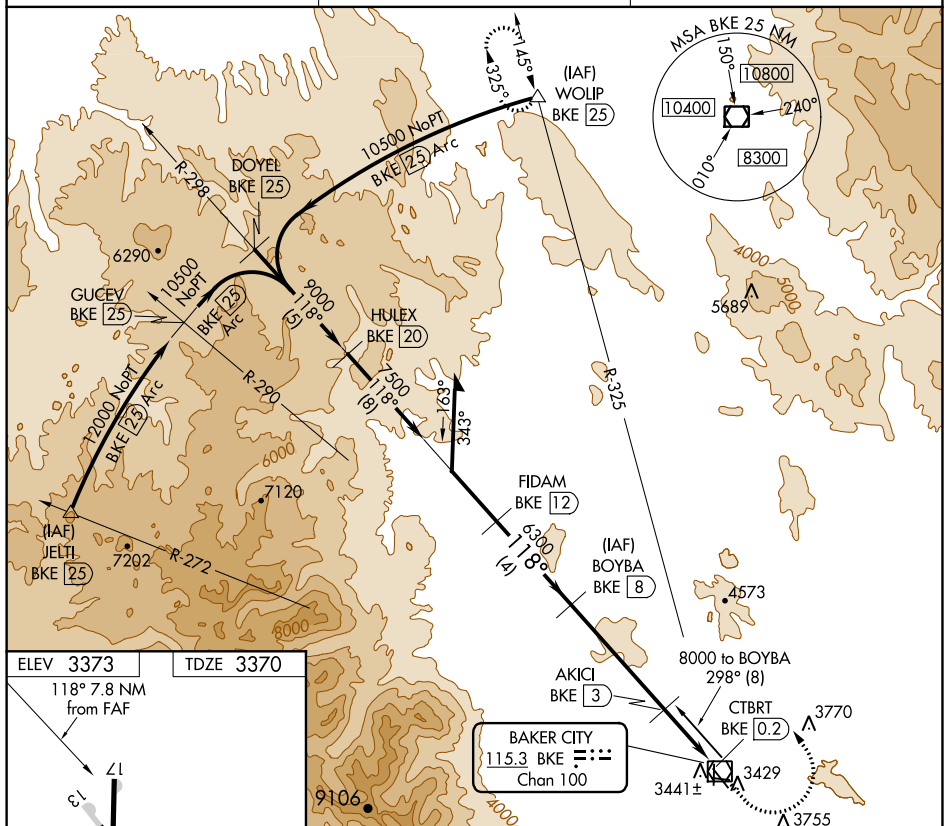
Circling to Rwy 8/17/26/35 NA at night.
 Helicopter visibility reduction below 1 SM NA.

MISSED APPROACH: Climb to 4000 then climbing left turn to 10500 via BKE R-325 to WOLUP and hold.

ASOS
134.275

SALT LAKE CENTER
128.05 306.95

UNICOM
123.0 (CTAF) **L**



Remain within 10 NM

BOYBA BKE 8

298°

8000

FIDAM BKE 12

7500

118°

3.49° TCH 55

6300

4440

AKICI BKE 3

CTBRT BKE 0.2

4 NM

5 NM

2.8 NM

VGSI and descent angles not coincident (VGSI 3.00/TCH 55).

CATEGORY	A	B	C	D
S-13	4000-1	630 (700-1)	4000-1 ³ / ₄ 630 (700-1 ³ / ₄)	4000-2 630 (700-2)
C CIRCLING	4000-1	627 (700-1)	4560-3 1187 (1200-3)	4720-3 1347 (1400-3)