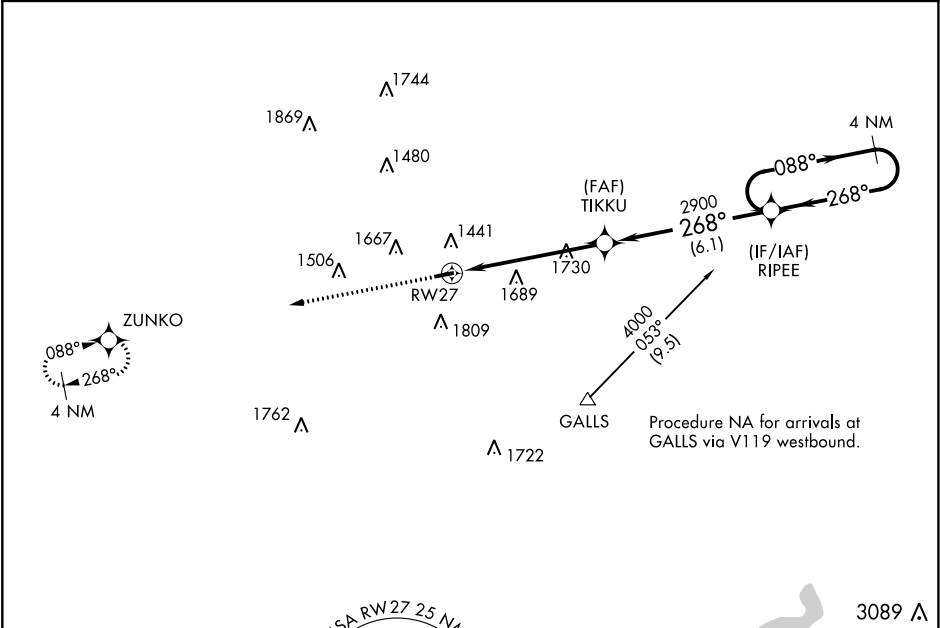


APP CRS	Rwy Idg	3500
268°	TDZE	1069
	Apt Elev	1069

RNAV (GPS) RWY 27

GREENE COUNTY (WAY)

RNP APCH.		MISSED APPROACH: Climb to 4000 direct ZUNKO and hold.
<div>▼</div>	Rwy 27 helicopter visibility reduction below 1 SM NA. Use Washington altimeter setting, when not received use Morgantown altimeter setting and increase all MDAs 20 feet. Straight-in, Circling Rwy 27 NA at night.	
<div>▲</div> NA		
AFJ AWOS-3PT 119.175	CLARKSBURG APP CON★ 121.15 284.65	UNICOM 122.8 (CTAF) 0



ELEV 1069

TDZE 1069

MSA RW27 25 NM

4200

268° to RW27

3500 X 75

2

4000

ZUNKO

Visual Segment - Obstacles.

TIKKU

RW27

2900

RIPEE

4000

088°

268°

4 NM Holding Pattern

5.6 NM

6.1 NM

CATEGORY	A	B	C	D
LNNAV MDA	2100-1¼ 1031 (1100-1¼)	2100-1½ 1031 (1100-1½)	2100-3 1031 (1100-3)	NA
CIRCLING	2100-1¼ 1031 (1100-1¼)	2220-1½ 1151 (1200-1½)	2220-3 1151 (1200-3)	NA