

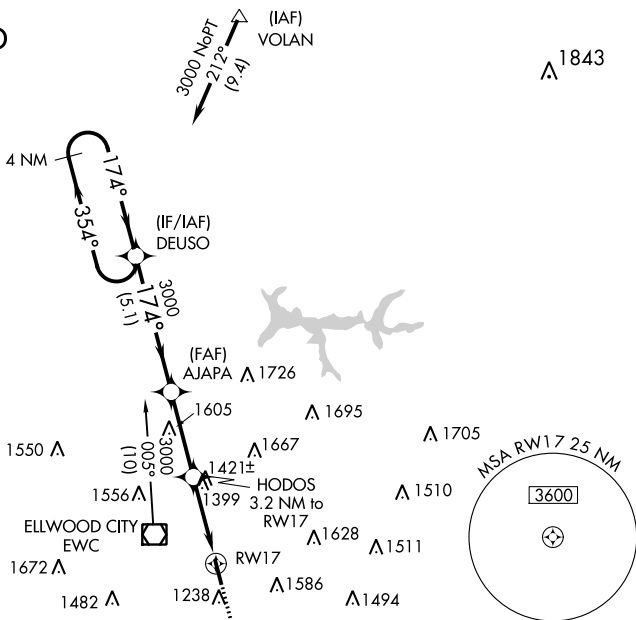
RNAV (GPS) RWY 17  
ZELIENOPLE MUNI (PJC)

**T** Rwy 17 helicopter visibility reduction below 1 SM NA.  
**NA** Procedure NA at night.

**MISSED APPROACH:** Climb to 3100 direct EDAPY and hold.

CTAF  
122.9 

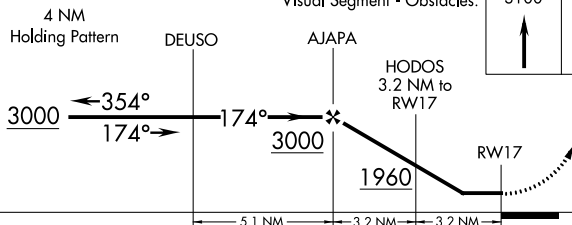
## RADAR REQUIRED




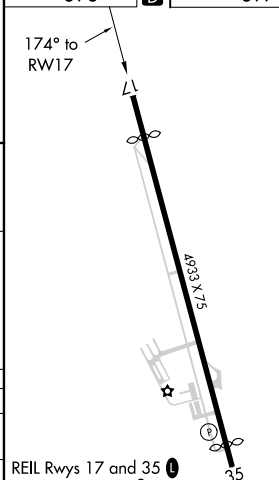
ELEV 898		TDZE 897
----------	---	----------

### Visual Segment - Obstacles.

3100



CATEGORY	A	B	C	D
LNAV MDA	1680-1 783 (800-1)	1680-1¼ 783 (800-1¼)	NA	
 CIRCLING	1680-1 782 (800-1)	1700-1¼ 802 (900-1¼)	NA	



## RNAV (GPS) RWY 17