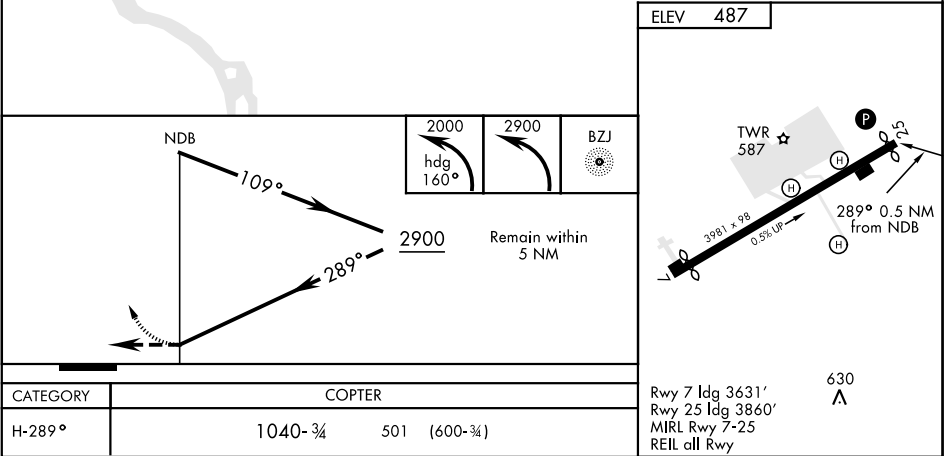
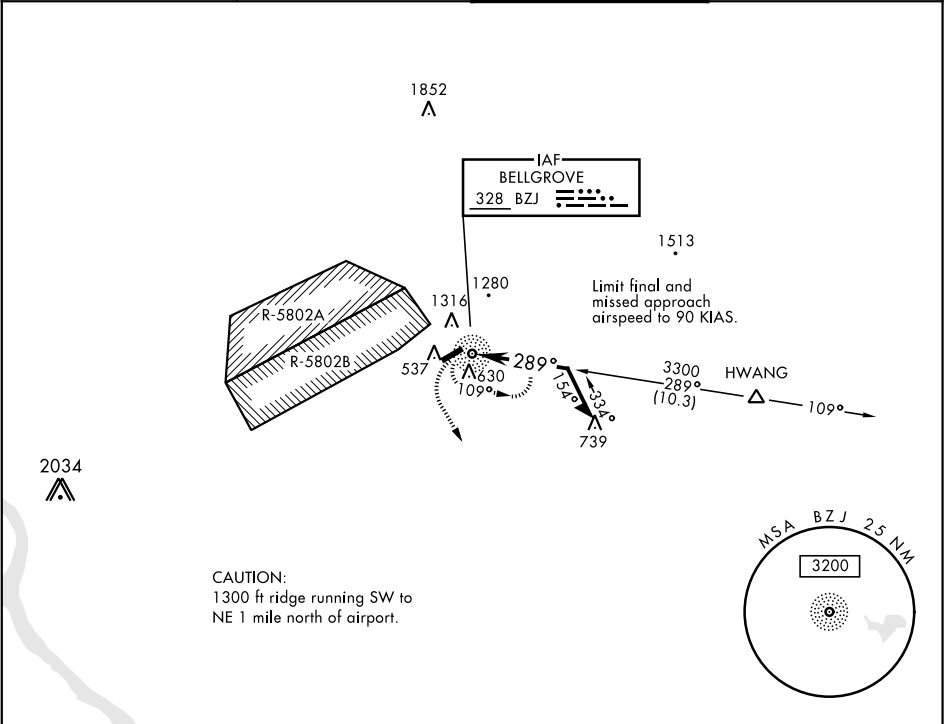


NDB BZJ 328	APCH CRS 289°	Rwy ldg TDZE Arprt Elev N/A 487	AL-6422 [USA]	MUIR AAF (KMUI)
▼ When local altimeter setting not received, use Harrisburg INTL altimeter setting and increase MDA 80 ft. ▲ Proceed VFR from BZJ NDB or conduct the specified missed approach.			MISSED APPROACH: Climb to 2000 via heading 160° then climbing left turn to 2900 direct BZJ NDB and hold.	
ASOS 124.175	HARRISBURG APP CON 118.25 269.45	MUIR TOWER ★ 126.2 (CTAF) 0 290.5	GND CON 121.625 269.525	



NE-4, 03 DEC 2020 to 31 DEC 2020

NE-4, 03 DEC 2020 to 31 DEC 2020