

WAAS
CH **78107**
W24A

APP CRS
239°

Rwy Idg
TDZE **818**
Apt Elev **819**

RNAV (GPS) RWY 24

MIFFLIN COUNTY (RVL)

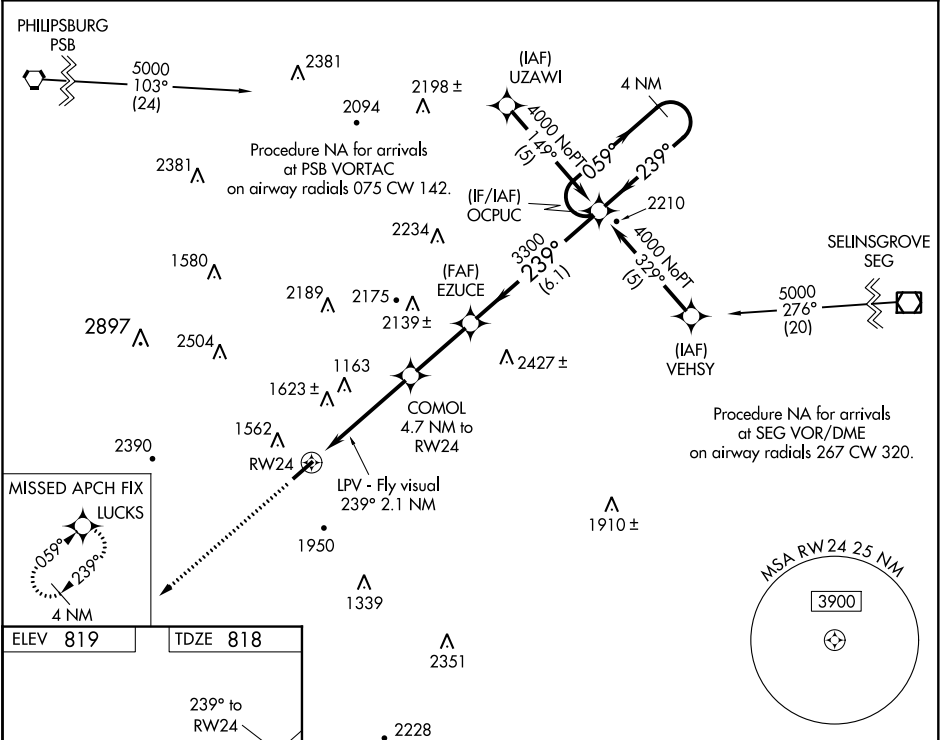
NA

-13°C

Circling NA northwest of Rwy 6-24. When local altimeter setting not received, use State College altimeter setting and increase LPV DA to 1602, increase all MDAs 100 feet; increase LPV visibility to 2 ¾ all Cats. DME/DME RNP-0.3 NA. Rwy 24 helicopter visibility reduction below ¾ SM NA.

MISSED APPROACH:
Climb to 4000 direct LUCKS and hold.

AWOS-3PT 123.85	NEW YORK CENTER 134.8 338.3	UNICOM 122.7 (CTAF)
---------------------------	---------------------------------------	-------------------------------



ELEV 819	TDZE 818				
239° to RW24		4000 LUCKS * LNAV only.			
5001 X 75		EZUCE OCPUC 4 NM Holding Pattern			
LPV - Fly visual 239° 2.1 NM		COMOL 4.7 NM to RW24			
RW24		2360* 3300			
4.7 NM		2.9 NM		6.1 NM	
CATEGORY	A	B	C	D	
LPV DA	1509-2 691 (700-2)			1509-2 ½ 691 (700-2 ½)	
LNAV MDA	2220-1 ¼ 1402 (1500-1 ¼)	2220-1 ½ 1402 (1500-1 ½)	2220-3 1402 (1500-3)		
CIRCLING	2220-1 ¼ 1401 (1500-1 ¼)	2220-1 ½ 1401 (1500-1 ½)	2220-3 1401 (1500-3)	2360-3 1541 (1600-3)	