

WAAS

CH **61228**

W29A

APP CRS

291°

Rwy Idg

TDZE

Apt Elev

3020

525

525

RNAV (GPS) RWY 29

QUAKERTOWN (UKT)

RNP APCH.

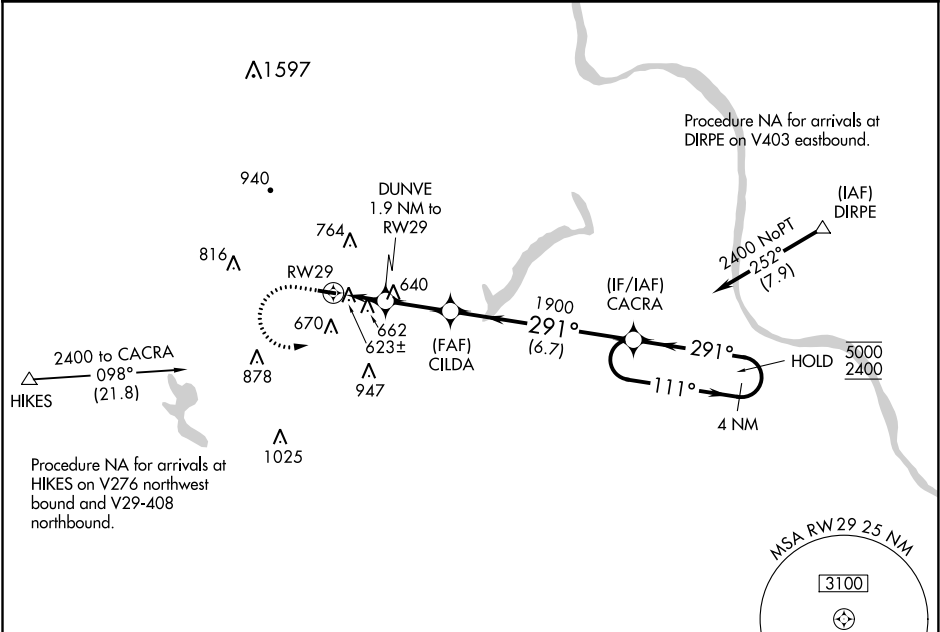
▼

▲

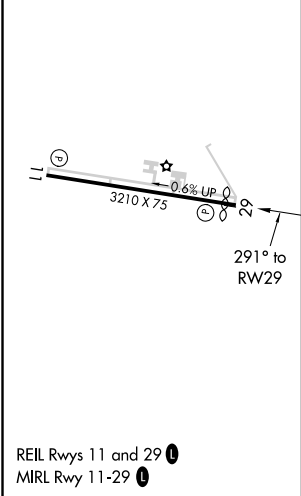
Procedure NA at night.
Rwy 29 helicopter visibility reduction below 1 SM NA.

MISSED APPROACH: Climb to 1000, then climbing left turn to 2400 direct CACRA and hold.

AWOS-3 119.475	PHILADELPHIA APP CON 123.8 291.7	CLNC DEL 118.55	UNICOM 122.725 (CTAF) 0
--------------------------	--------------------------------------------	---------------------------	-----------------------------------



ELEV 525	D	TDZE 525
----------	----------	----------



1000	2400	CACRA	Visual Segment - Obstacles.	
↑	↶	✦		
DUNVE 1.9 NM to RW29		CILDA	CACRA 4 NM Holding Pattern	
RW29		1900	111° → 5000 ← 291° 2400	
1.9 NM		2.4 NM	6.7 NM	
CATEGORY	A	B	C	D
LP MDA	920-1	395 (400-1)	920-1½ 395 (400-1½)	NA
LNAV MDA	960-1	435 (500-1)	960-1½ 435 (500-1½)	NA
C CIRCLING	1040-1 515 (600-1)	1080-1 555 (600-1)	1220-2 695 (700-2)	NA