

WAAS CH 56208 W26A	APP CRS 257°	Rwy Idg 4002 TDZE 1224 Apt Elev 1228
----------------------------------------	------------------------	-----------------------------------------------------------------

RNAV (GPS) RWY 26

ROSTRAVER (FWQ)

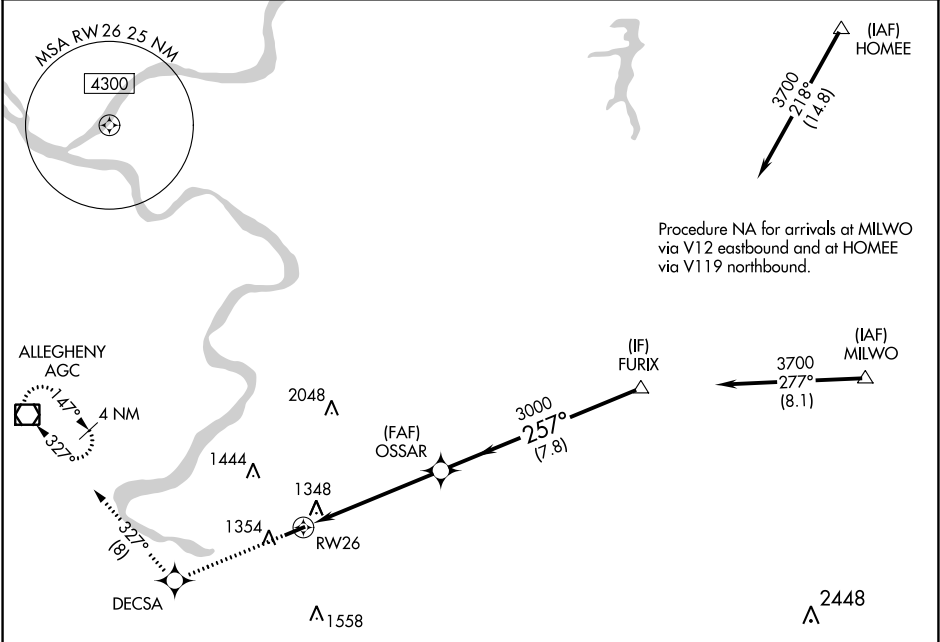
▼

NA

DME/DME RNP-0.3 NA. When local alimeter setting not received, use Allegheny County alimeter setting and increase all DA/MDA 40 feet, and increase LNAV Cats C and D visibility to 1½ mile. Rwy 26 helicopter visibility reduction below ¾ SM NA. Rwy 8 helicopter visibility reduction below 1 SM NA. Circling Rwy 8 NA at night.

MISSED APPROACH: Climb to 3000 direct DECSA, and right turn via 327° track to AGC VOR/DME and hold.

AWOS-3 118.475	PITTSBURGH APP CON 119.35 337.4	UNICOM 122.8 (CTAF) 0
--------------------------	-------------------------------------------	---------------------------------



ELEV 1228

TDZE 1224

3000

DECSA

AGC

OSSAR

FURIX

Procedure Turn NA

GP 3.00° TCH 50

327° tr

257°

3700

3000

5.3 NM

7.8 NM

257° to RW26

4002 X 75

1291±

MIRL Rwy 8-26 0

REIL Rwy 8 and 26 0