

WAAS CH 50311 W05A	APP CRS 050°	Rwy Idg TDZE Apt Elev	3999 1906 1915
----------------------------------------	------------------------	-----------------------------	-------------------------------------------

RNAV (GPS) RWY 5

POCONO MOUNTAINS MUNI (MPO)

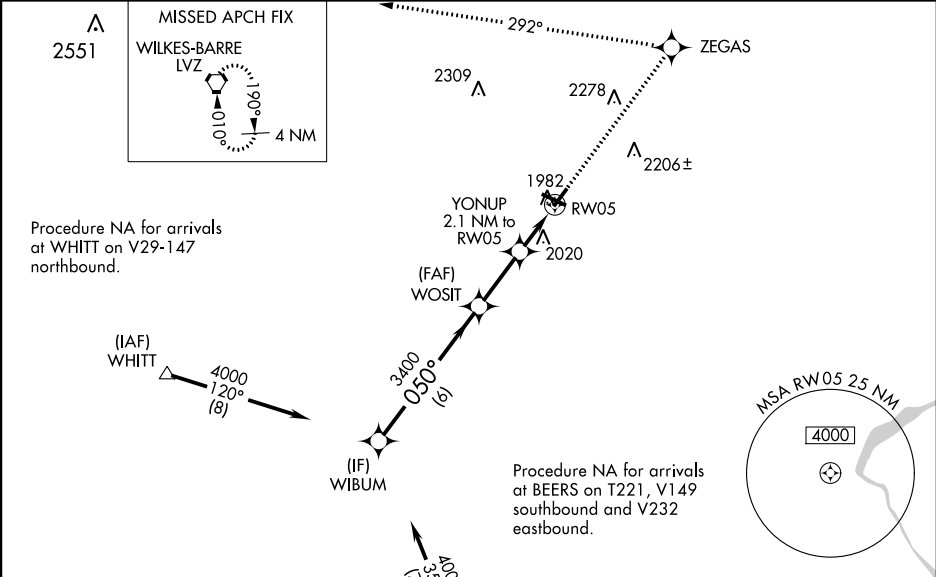
▼

⚠

Baro-VNAV NA when using Wilkes-Barre/Scranton altimeter setting. For uncompensated Baro-VNAV systems, LNAV/VNAV NA below -18°C (0°F) or above 45°C (113°F). DME/DME RNP-0.3 NA. Rwy 5 helicopter visibility reduction below ¾ SM NA. When local altimeter setting not received, use Wilkes-Barre/Scranton altimeter setting: increase LPV DA to 2339 feet, LNAV/VNAV DA to 2431 feet and all visibilities ¼ SM; increase all MDAs 180 feet and visibility Cat C and D ½ SM. Circling Rwy 23 NA at night.

MISSED APPROACH:
Climb to 4000 direct ZEGAS and left turn via 292° track to LVZ VORTAC and hold.

ASOS 120.275	WILKES-BARRE APP CON 126.3 256.7	CLNC DEL 125.3	UNICOM 122.7 (CTAF) 1
------------------------	--------------------------------------------	--------------------------	---------------------------------



ELEV 1915

TDZE 1906

Procedure Turn NA

VGSI and RNAV glidepath not coincident. (VGSI Angle 4.00/TCH 43).

4000

ZEGAS

292° tr

LVZ

*LNAV only

WIBUM

4000

050°

WOSIT

YONUP
2.1 NM to RW05

3400

*2600

RW05

GP 3.00°
TCH 60

6 NM

2.4 NM

2.1 NM

CATEGORY	A	B	C	D
LPV DA	2160-1		254 (300-1)	
LNAV/VNAV DA	2252-1¼		346 (400-1¼)	
LNAV MDA	2320-1	414 (500-1)	2320-1¼	414 (500-1¼)
CIRCLING	2480-1 565 (600-1)	2500-1 585 (600-1)	2600-2 685 (700-2)	2660-2½ 745 (800-2½)

050° to RW05

REIL 31

REIL Rwy 5, 13, and 23 1

MIRL Rwy 5-23 and 13-31 1

050° X 75

3999 X 100

1.0% UP

13

23

5

13