

WAAS
CH **90107**
W27A

APP CRS
273°

Rwy Idg
TDZE
Apt Elev

5004
1184
1184

RNAV (GPS) RWY 27

WASHINGTON COUNTY (AFJ)

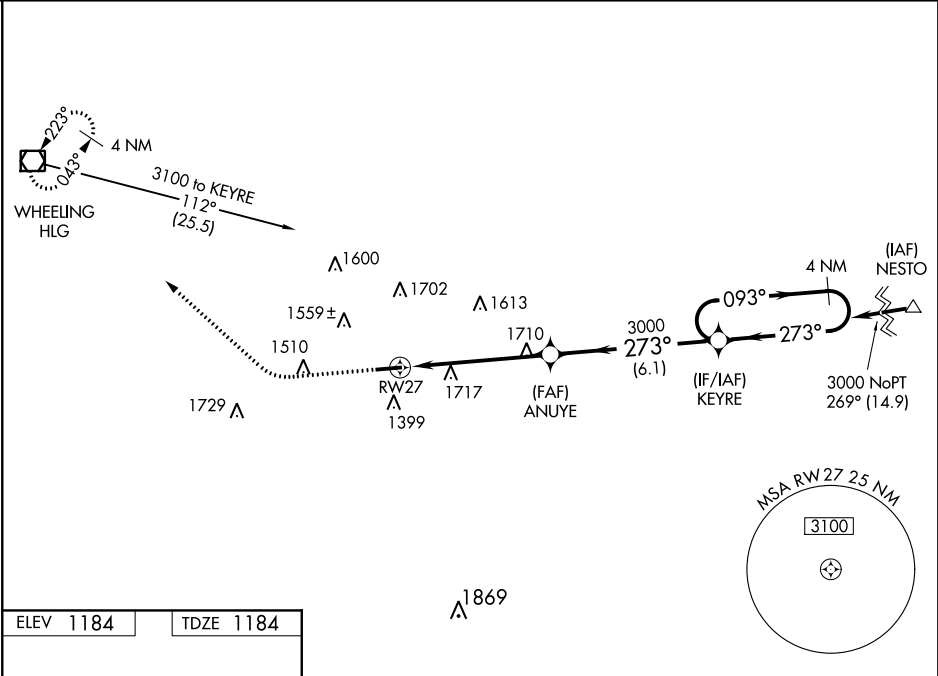
▼

⚠

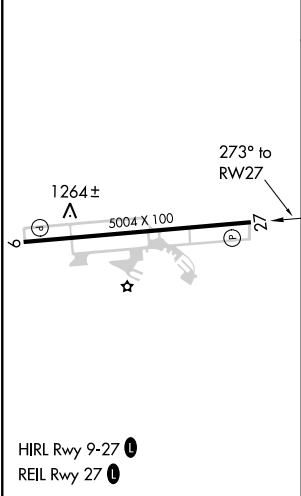
For uncompensated Baro-VNAV systems, LNAV/VNAV NA below -17°C (2°F) or above 45°C (114°F). DME/DME RNP-0.3 NA. Helicopter visibility reduction below ¼ SM NA. Night Landing: Rwy 9 NA. VDP and Baro-VNAV NA when using Wheeling altimeter setting. When local altimeter setting not received, use Wheeling altimeter setting and increase all DA/MDA 40 feet, increase Circling Cat A and Cat D visibility ¼ mile.

MISSED APPROACH: Climb to 1700 then climbing right turn to 3300 direct HLG VOR/DME and hold.

AWOS-3PT 119.175	PITTSBURGH APP CON 119.35 285.575	CLNC DEL 127.3	UNICOM 122.975 (CTAF) 0
----------------------------	---	--------------------------	-----------------------------------



ELEV 1184	TDZE 1184
-----------	-----------



1700

↑

3300

↗

HLG

◻

VGSI and RNAV glidepath not coincident

(VGSI Angle 3.09/TCH 62).

* LNAV only.

ANUYE

3000

KEYRE

4 NM Holding Pattern

* 2.3 NM to RW27

RW27

2.3

3.1 NM

6.1 NM

273°

093°

273°

3000

GP 3.09°

TCH 57

CATEGORY	A	B	C	D
LPV DA	1386-¾		202 (300-¾)	
LNAV/VNAV DA	2140-4		956 (1000-4)	
LNAV MDA	1980-1 796 (800-1)	1980-1¼ 796 (800-1¼)	1980-2½ 796 (800-2½)	796 (800-2½)
CIRCLING	1980-1 796 (800-1)	1980-1¼ 796 (800-1¼)	1980-2½ 796 (800-2½)	2040-2¾ 856 (900-2¾)