

LOC I-DUJ 109.9	APP CRS 252°	Rwy Idg TDZE Apt Elev	5503 1817 1817
---------------------------	------------------------	-----------------------------	---

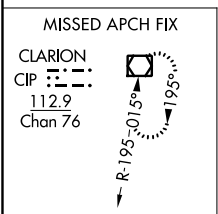
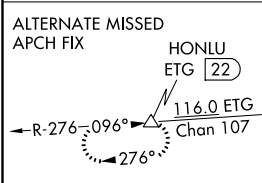
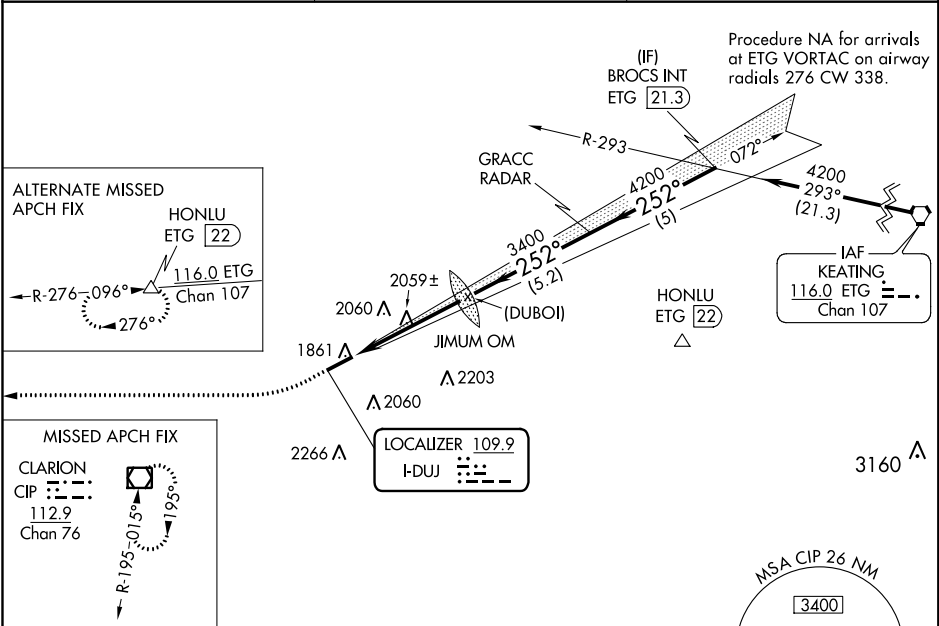
ILS or LOC RWY 25
DUBOIS RGNL (DUJ)

⚠ Radar Required. When local altimeter setting not received, use Clearfield altimeter setting and increase all DA 96 feet and all MDA 100 feet and S-LOC 25 Cat C and Circling Cat C visibilities ¼ mile and S-LOC 25 Cat D visibility ½ mile. For inoperative MALS R when using Clearfield altimeter setting, increase S-ILS 25 all Cats visibility to 1 mile.

MALS R

MISSED APPROACH: Climb to 2400 then climbing right turn to 4000 direct CIP VOR/DME and hold.

ASOS 119.025	CLEVELAND CENTER 126.725 291.65	UNICOM 123.0 (CTAF) 0
------------------------	---	---------------------------------



ELEV	1817	D	TDZE	1817
------	------	----------	------	------

REIL Rwy 7 **0**
HIRL Rwy 7-25 **0**

FAF to MAP 4.6 NM

Knots	60	90	120	150	180
Min:Sec	4:36	3:04	2:18	1:50	1:32

	2400	4000	CIP	(DUBOI)	GRACC RADAR	BROCS INT ETG [21.3]	Procedure Turn NA
	↑	↷		JIMUM OM			GS 3.00° TCH 57
				3400	252°	4200	
				3353	252°	4200	
				4.6 NM	5.2 NM	5 NM	
CATEGORY	A		B		C		D
S-ILS 25	2017-½		200 (200-½)				
S-LOC 25	2320-½ 503 (600-½)		2320-1 503 (600-1)				
CIRCLING	2320-1 503 (600-1)		2320-1½ 503 (600-1½)		2380-2 563 (600-2)		