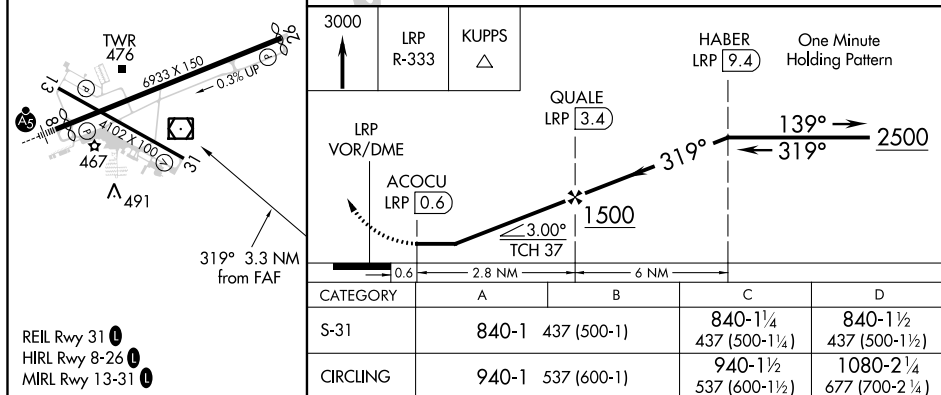
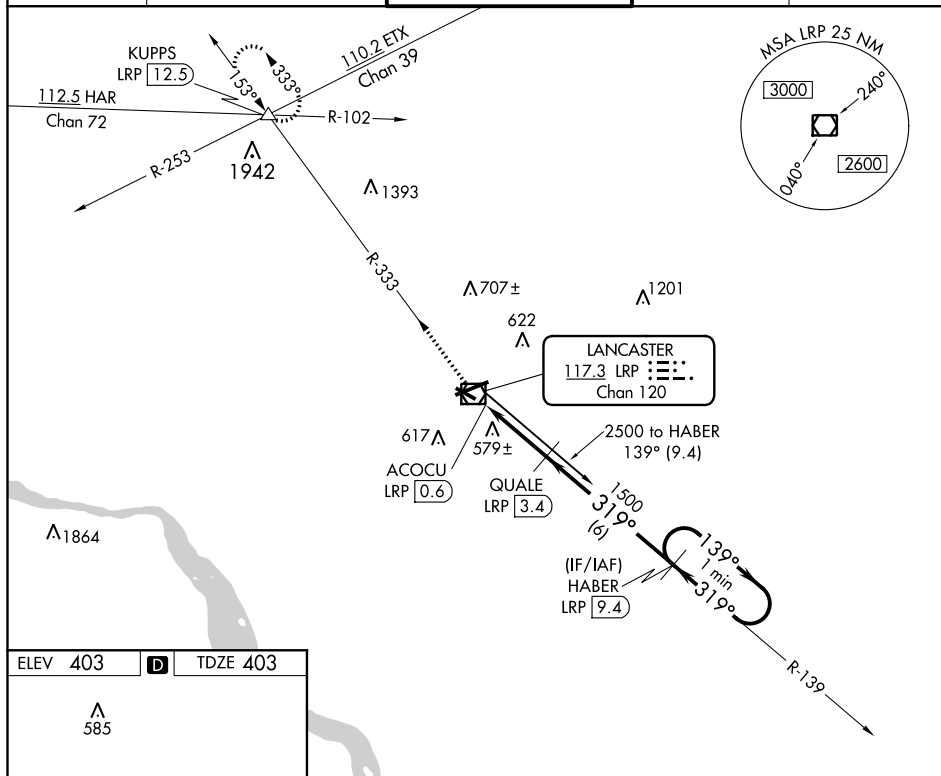


VOR/DME RWY 31
LANCASTER (LNS)

MISSED APPROACH: Climb to 3000 via LRP VOR/DME R-333 to KUPPS INT/LRP 12.5 DME and hold.

ATIS 125.675	HARRISBURG APP CON 126.45 281.525	LANCASTER TOWER ★ 120.9 (CTAF) 0 251.1	GND CON 121.8	UNICOM 122.95
-----------------	--------------------------------------	---	------------------	------------------



NE-4, 03 DEC 2020 to 31 DEC 2020