

WAAS CH 77915 W08A	APP CRS 077°	Rwy Idg 6118 TDZE 399 Apt Elev 403
--	------------------------	---

RNAV (GPS) RWY 8
LANCASTER (LNS)

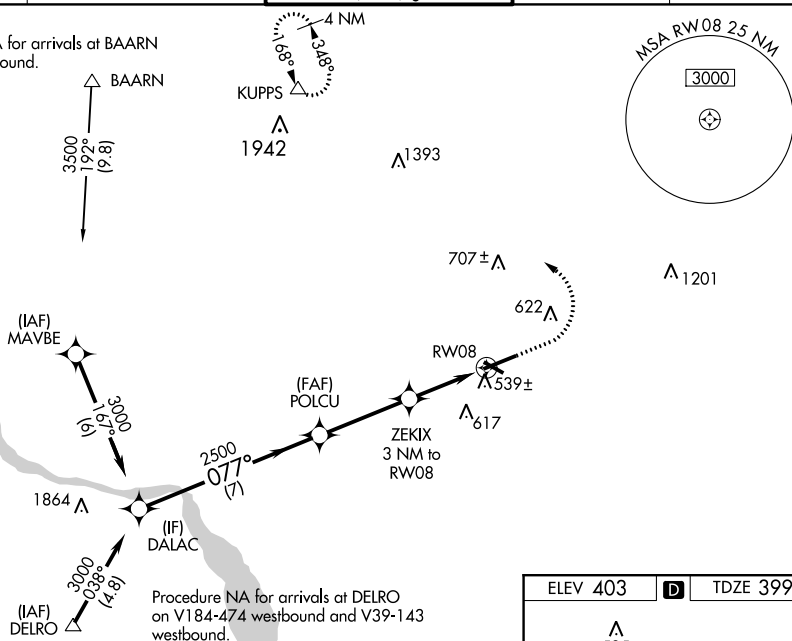
For uncompensated Baro-VNAV systems, LNAV/VNAV NA below -15°C (5°F) or above 54°C (130°F). DME/DME RNP-0.3 NA. When local altimeter setting not received, use Harrisburg Intl altimeter setting and increase all DA 64 feet and all MDA 80 feet, increase LNAV/VNAV all Cats visibility ¼ mile, LNAV and Circling Cats C and D visibility ¼ mile. Baro-VNAV and VDP NA when using Harrisburg Intl altimeter setting. Night landing: Rwy 13, 31 NA. For inoperative MALSR increase LNAV/VNAV all Cats visibility to 1 ¼ mile, and LNAV Cats C/D visibility to 1 ½ mile. For inoperative MALSR when using Harrisburg Intl altimeter setting, increase LPV all Cats visibility to ¾ mile, LNAV/VNAV all Cats visibility to 1 ½ mile and LNAV Cats C/D visibility to 1 ¾ mile.



MISSED APPROACH:
Climb to 1200 then
climbing left turn to
3000 direct KUPPS
and hold.

ATIS 125.675	HARRISBURG APP CON 126.45 281.525	LANCASTER TOWER ★ 120.9 (CTAF) 0 251.1	GND CON 121.8	UNICOM 122.95
------------------------	---	--	-------------------------	-------------------------

Procedure NA for arrivals at BAARN
on V12 westbound.



Procedure NA for arrivals at DELRO
on V184-474 westbound and V39-143
westbound.

[illegible]