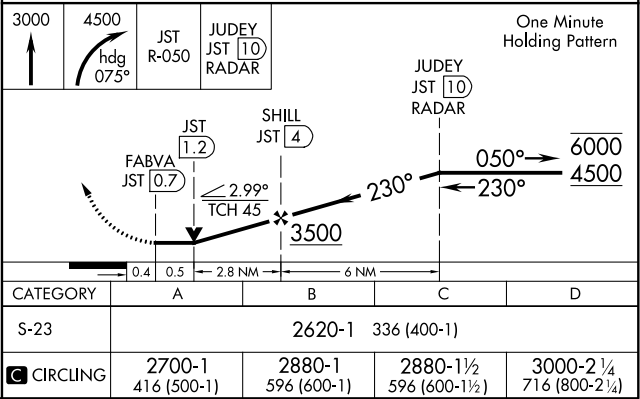
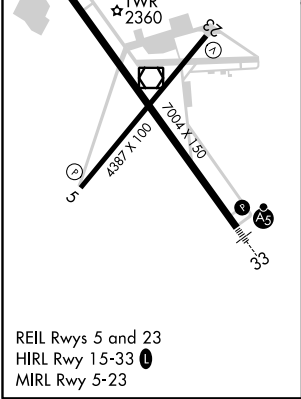
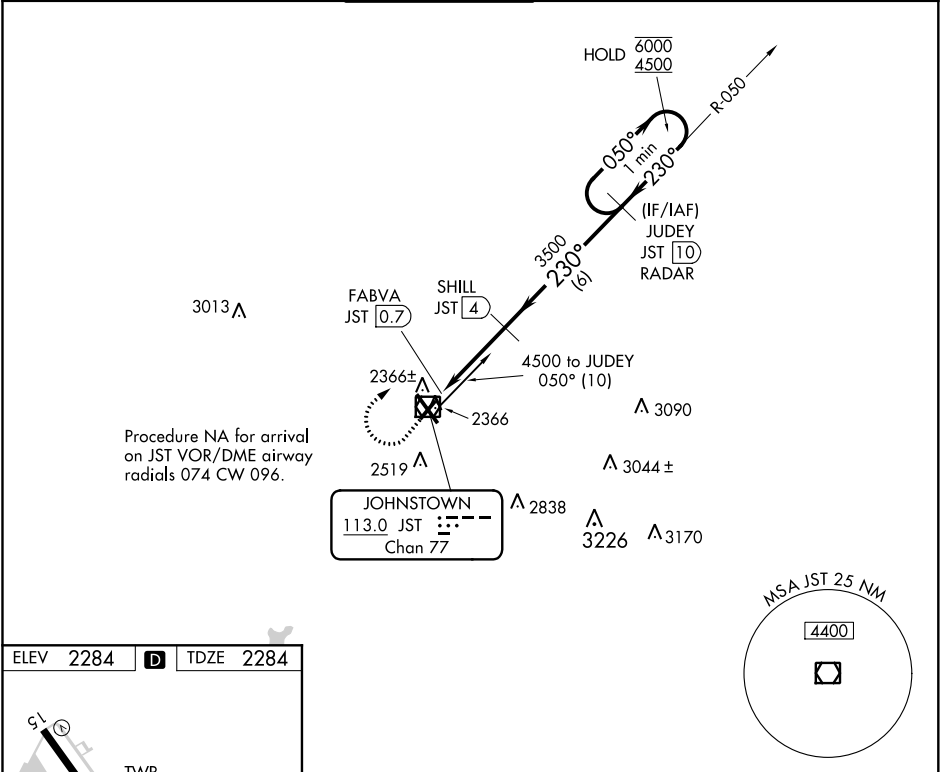


VOR/DME JST	APP CRS	Rwy Idg	4386
113.0	230°	TDZE	2284
Chan 77		Apt Elev	2284

VOR Z RWY 23

JOHN MURTHA JOHNSTOWN-CAMBRIA COUNTY (JST')

DME required.			MISSED APPROACH: Climb to 3000 then climbing right turn to 4500 on heading 075° and JST VOR/DME R-050 to JUDEY/JST 10 DME/RADAR and hold.		
<div><div><div></div><div></div></div></div> <div>Rwy 23 helicopter visibility reduction below ¾ SM NA.</div>					
ATIS 118.325	JOHNSTOWN APP CON ★ 121.2 299.2	JOHNSTOWN TOWER ★ 125.75 (CTAF) 0	GND CON 121.6	CLNC DEL 126.85 235.775	UNICOM 122.95



NE-4, 03 DEC 2020 to 31 DEC 2020

NE-4, 03 DEC 2020 to 31 DEC 2020