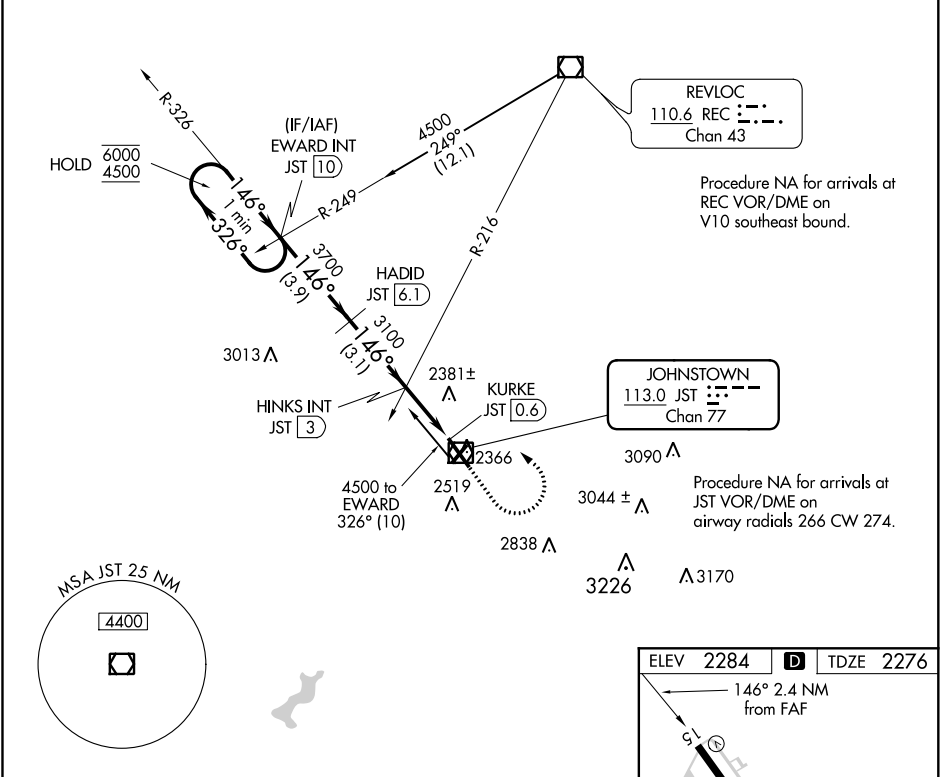


VOR/DME JST	APP CRS	Rwy Idg	7003
113.0	146°	TDZE	2276
Chan 77		Apt Elev	2284

VOR Z RWY 15

JOHN MURTHA JOHNSTOWN-CAMBRIA COUNTY (JST)

DME required.		MISSED APPROACH: Climb to 3000 then climbing left turn to 4500 on heading 300° and JST VOR/DME R-326 to EWARD INT/JST 10 DME and hold.			
ATIS	JOHNSTOWN APP CON	JOHNSTOWN TOWER	GND CON	CLNC DEL	UNICOM
118.325	121.2 299.2	125.75 (CTAF) 0	121.6	126.85 235.775	122.95



One Minute Holding Pattern		EWARD INT JST 10		HADID JST 6.1		HINKS INT JST 3		JST 1.6		KURKE JST 0.6		EWARD INT	
6000 ← 326°		4500 → 146°		3700		3100		3000		TCH 52			
		3.9 NM		3.1 NM		1.4 NM		1.1 NM					
CATEGORY	A	B		C		D							
S-15	2660-1	384 (400-1)		2660-1 1/8		384 (400-1 1/8)							
CIRCLING	2700-1	2880-1		2880-1 1/2		3000-2 1/4							
	416 (500-1)	596 (600-1)		596 (600-1 1/2)		716 (800-2 1/4)							

