



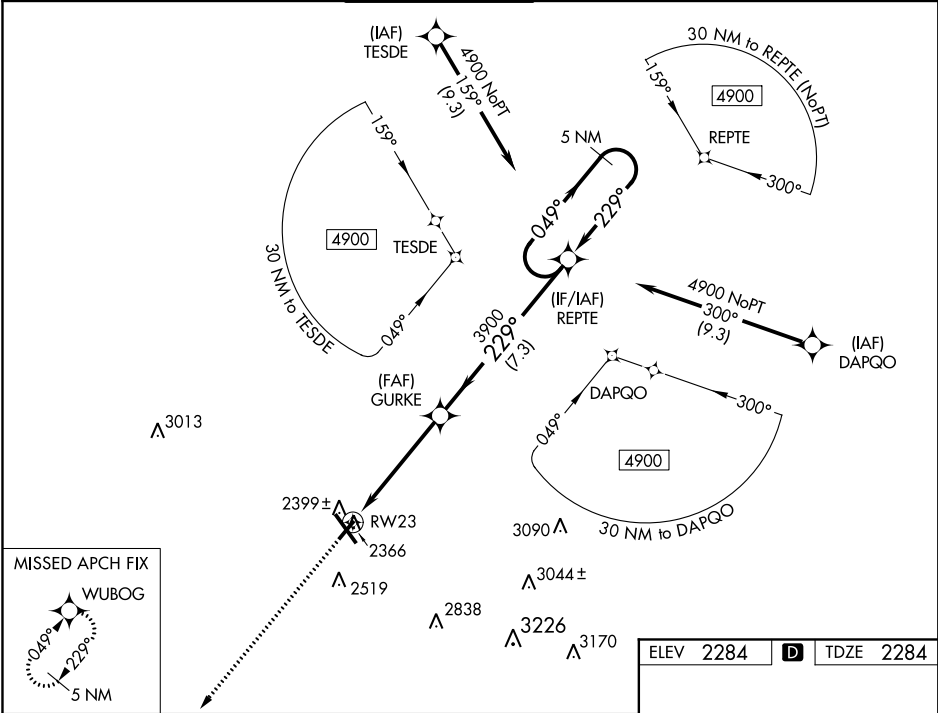
WAAS CH 53429 W23A	APP CRS 229°	Rwy Idg TDZE Apt Elev	4386 2284 2284
--	------------------------	-----------------------------	---

RNAV (GPS) RWY 23

JOHN MURTHA JOHNSTOWN-CAMBRIA COUNTY (JST)

 	For uncompensated Baro-VNAV systems, LNAV/VNAV NA below -19°C (-2°F) or above 29°C (84°F). When local altimeter setting not received, procedure NA. DME/DME RNP-0.3 NA. Rwy 23 helicopter visibility reduction below ¾ SM NA.	MISSED APPROACH: Climb to 4900 direct WUBOG and hold.
--	---	---

ATIS 118.325	JOHNSTOWN APP CON ★ 121.2 299.2	JOHNSTOWN TOWER ★ 125.75 (CTAF) 0	GND CON 121.6	CLNC DEL 126.85 235.775	UNICOM 122.95
------------------------	---	---	-------------------------	-----------------------------------	-------------------------



4900		WUBOG		* LNAV only.	
↑		★			
RW23		GURKE		REPT	
1.1 NM		3.9 NM		7.3 NM	
229°		229°		049°	
3900		3900		4900	
GP 3.00°		TCH 45			
CATEGORY	A	B	C	D	
LPV DA		2534-¾	250 (300-¾)		
LNAV/VNAV DA		2584-1	300 (300-1)		
LNAV MDA		2660-1	376 (400-1)		
CIRCLING	2700-1 416 (500-1)	2880-1 596 (600-1)	2880-1½ 596 (600-1½)	3000-2¼ 716 (800-2¼)	

