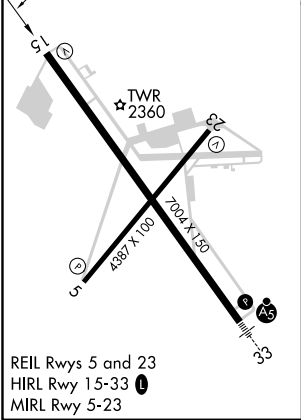
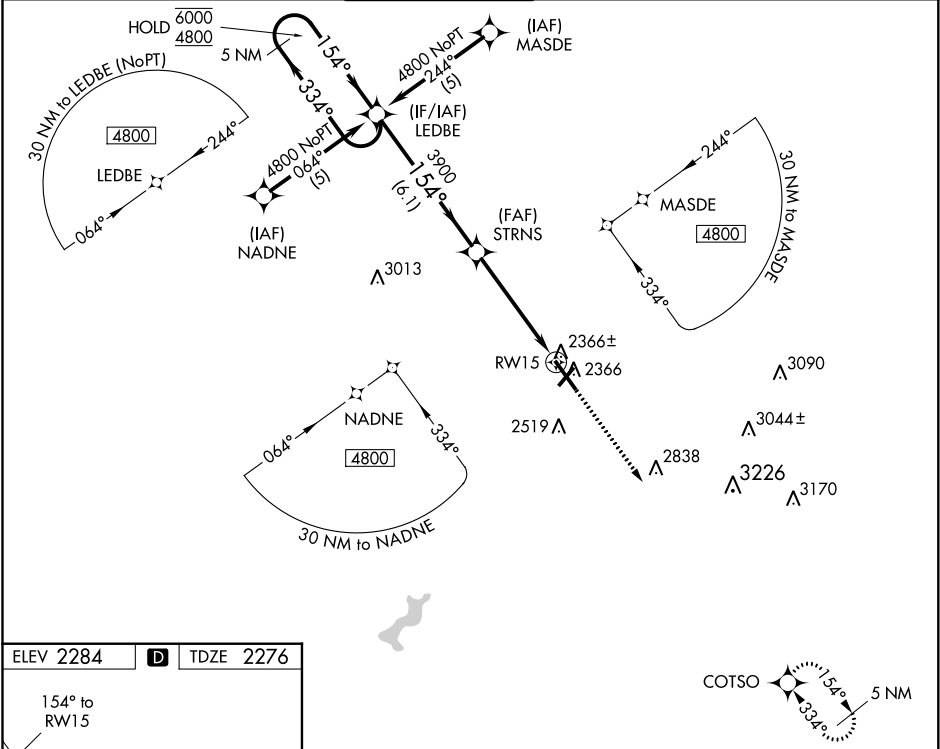


WAAS CH 53513 W15A	APP CRS 154°	Rwy Idg TDZE 2276 Apt Elev 2284
--	------------------------	---

RNAV (GPS) RWY 15

JOHN MURTHA JOHNSTOWN-CAMBRIA COUNTY (JST)

RNP APCH.			MISSED APPROACH: Climb to 4900 direct COTSO and hold.		
<div><div><div>▼</div><div>▲</div></div></div>	For uncompensated Baro-VNAV systems, LNAV/VNAV NA below -19°C or above 54°C.				
ATIS 118.325	JOHNSTOWN APP CON ★ 121.2 299.2	JOHNSTOWN TOWER ★ 125.75 (CTAF) 0	GND CON 121.6	CLNC DEL 126.85 235.775	UNICOM 122.95



5 NM Holding Pattern		LED BE		STRNS		RW15	
6000 ← 334°		4800 → 154°		3900		1.1 NM to RW15	
GP 3.00° TCH 52		3900		6.1 NM		3.8 NM	
CATEGORY		A		B		C	
LPV DA		2526-¾		250 (300-¾)			
LNAV/VNAV DA		2595-1		319 (400-1)			
LNAV MDA		2680-1		404 (400-1)		2680-1½	
CIRCLING		2700-1		2880-1		2880-1½	
		416 (500-1)		596 (600-1)		596 (600-1½)	
						3000-2½	
						716 (800-2½)	