

LOC I-JST <u>110.1</u>	APP CRS 334°	Rwy Idg TDZE Apt Elev	7003 2281 2284
----------------------------------	------------------------	-----------------------------	---

ILS or LOC RWY 33
JOHN MURTHA JOHNSTOWN-CAMBRIA COUNTY (JST)

DME required.

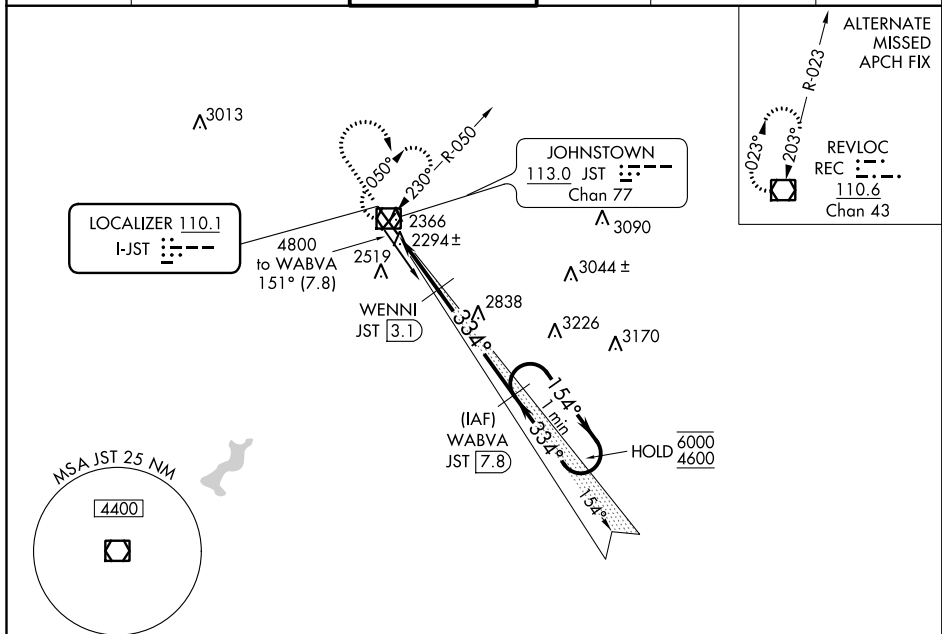
T Glide slope unusable beyond 5 degrees left of course.
A For inop ALS, increase S-LOC 33 Cat C/D visibility to $\frac{7}{8}$ SM.

MALSR

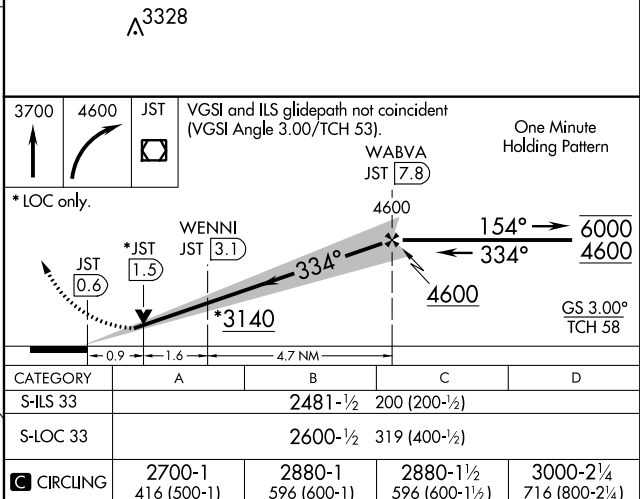
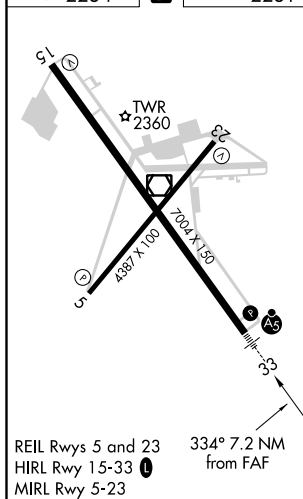


MISSED APPROACH: Climb to 3700 then climbing right turn to 4600 direct JST VOR/DME and hold, continue climb-in-hold to 4600.

ATIS 118.325	JOHNSTOWN APP CON ★ 121.2 299.2	JOHNSTOWN TOWER ★ 125.75 (CTAF) 0	GND CON 121.6	CLNC DEL 126.85 235.775	UNICOM 122.95
-----------------	------------------------------------	--------------------------------------	------------------	----------------------------	------------------



ELEV 2284	D	TDZE 2281
-----------	----------	-----------



JOHNSTOWN, PENNSYLVANIA
Amdt 7B 15AUG19

JOHN MURTHA JOHNSTOWN-CAMBRIA COUNTY (JST)
40°19'N-78°50'W **|| S or LOC RWY 33**

ILS or LOC RWY 33