

VOR/DME HVQ  
**117.4**  
Chan **121**

APP CRS  
**084°**

Rwy Idg  
TDZE  
Apt Elev  
**947**

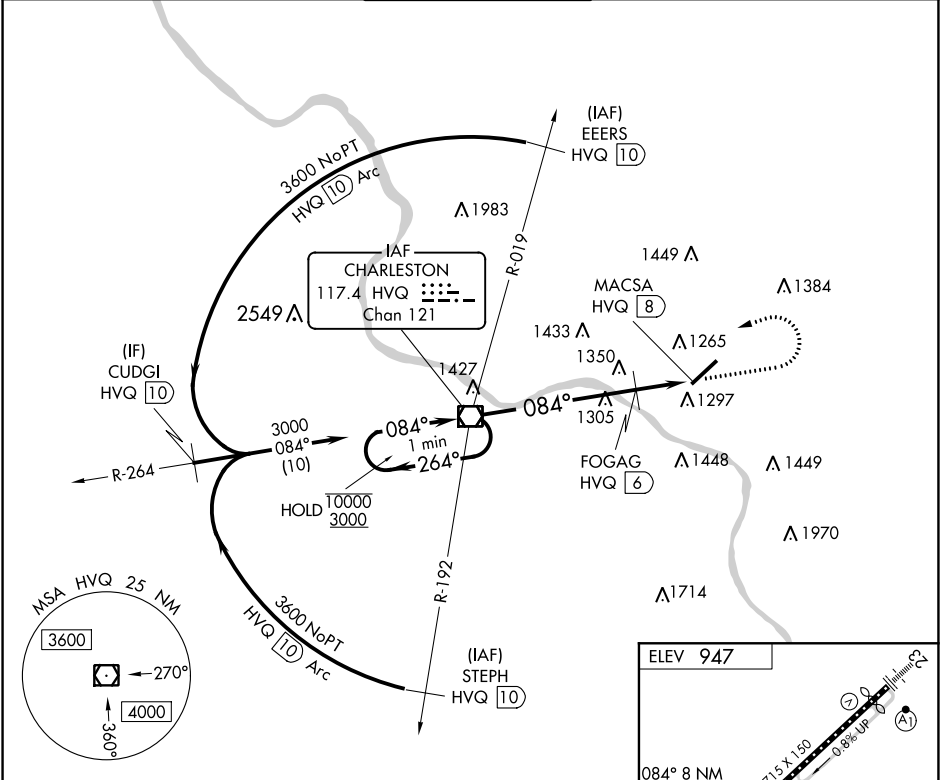
N/A  
N/A  
**947**

VOR-A  
YEAGER (CRW)

DME required.

MISSED APPROACH: Climb to 1800 then climbing left turn to 3500 direct HVQ VOR/DME and hold.

ATIS <b>127.6</b>	CHARLESTON APP CON <b>124.1 269.125</b>	CHARLESTON TOWER <b>125.7 257.8</b>	GND CON <b>121.8 348.6</b>	CLNC DEL <b>118.55</b>
----------------------	--	--	-------------------------------	---------------------------



One Minute Holding Pattern

1800 3500 HVQ

10000 3000 264° 084°

FOGAG HVQ 6

MACSA HVQ 8

1720

6 NM 2 NM

ELEV 947

084° 8 NM from FAF

TWR 1037

671.5 X 150

0.8% UP

CATEGORY	A	B	C	D
CIRCLING	1720-1 773 (800-1)	1760-2½ 813 (900-2½)	1880-3 933 (1000-3)	
FOGAG FIX MINIMUMS				
CIRCLING	1600-1 653 (700-1)	1760-2½ 813 (900-2½)	1880-3 933 (1000-3)	

FAF to MAP 8 NM

Knots	60	90	120	150	180
Min:Sec	8:00	5:20	4:00	3:12	2:40

NE-4, 03 DEC 2020 to 31 DEC 2020

NE-4, 03 DEC 2020 to 31 DEC 2020