

WAAS CH <b>62813</b> <b>W04A</b>	APP CRS <b>044°</b>	Rwy Idg TDZE <b>962</b> Apt Elev <b>962</b>
--	------------------------	---

RNAV (GPS) RWY 4

WILKES-BARRE/SCRANTON INTL (AVP)

⚠

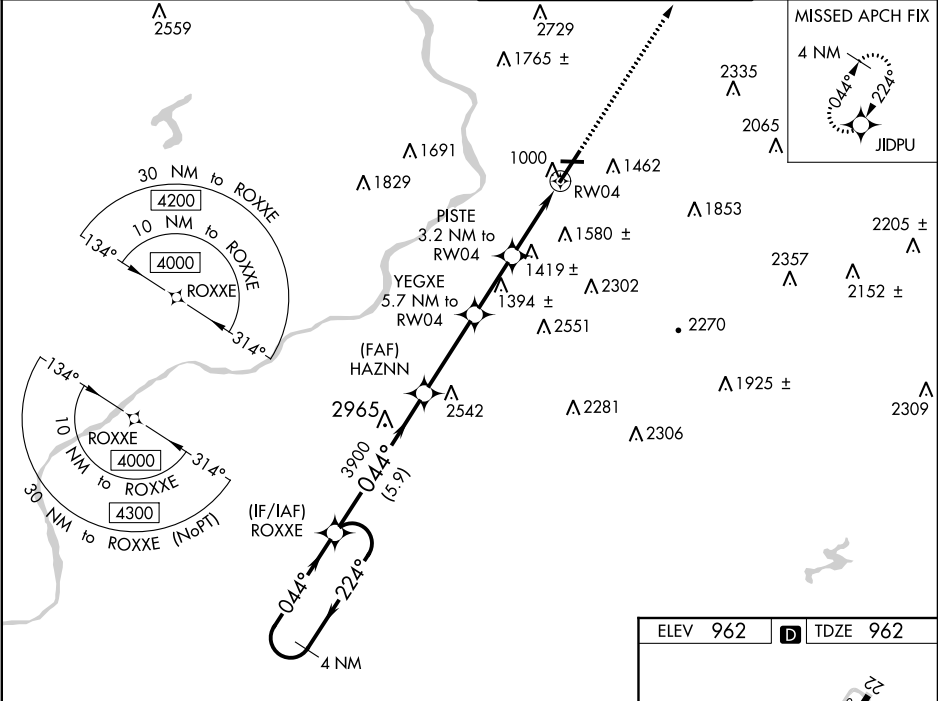
⚠

Circling to Rwy 10 and 28 NA at night. For uncompensated Baro-VNAV systems, LNAV/VNAV NA below -17°C (2°F) or above 54°C (130°F). When local altimeter setting not received, procedure NA. For inop MALS, increase LNAV Cats C/D visibility to 2 miles. Circling NA for Cats C and D southeast of Rwy 4-22. DME/DME RNP-0.3 NA. \*\*RVR 1800 authorized with use of FD or AP or HUD to DA.

MALS

MISSED APPROACH: Climb to 4000 direct JIDPU and hold.

ATIS <b>111.6</b>	WILKES-BARRE APP CON <b>120.95 256.7</b> (280°-100°) <b>126.3 256.7</b> (101°-279°)	WILKES-BARRE TOWER <b>120.1 257.8</b>	GND CON <b>121.9</b>
----------------------	---	--	-------------------------



<div>4 NM Holding Pattern</div> <div>ROXXE</div>				<div>HAZNN</div> <div>3900</div>				<div>YEGXE</div> <div>5.7 NM to RW04</div>				<div>PISTE</div> <div>3.2 NM to RW04</div>				<div>4000</div> <div>JIDPU</div>	
<div>4000</div> <div>← 224°</div> <div>→ 044°</div>				<div>→ 044°</div>				<div>→ 044°</div>				<div>*LNAV only.</div>					
<div>GP 3.00°</div> <div>TCH 53</div>				<div>3900</div>				<div>*2820</div>				<div>*2020</div>					
<div>← 5.9 NM</div>				<div>← 3.4 NM</div>				<div>← 2.5 NM</div>				<div>← 1.1 NM</div> <div>← 2.1 NM</div>					
CATEGORY		A		B		C		D									
LPV DA **				1162/24		200 (200-½)											
LNAV/VNAV DA				1618-1¼		656 (700-1¼)											
LNAV MDA		1680/24		718 (800-½)		1680-1½		718 (800-1½)									
CIRCLING		1840-1¼ 878 (900-1¼)		1980-1½ 1018 (1100-½)		1980-3 1018 (1100-3)		2280-3 1318 (1400-3)									

