

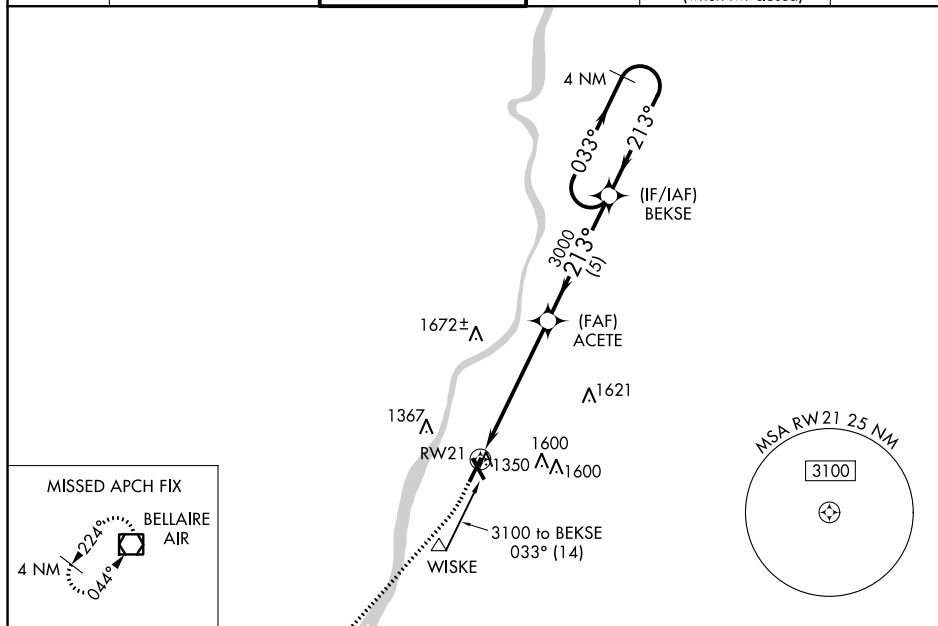
WAAS CH 58240 W21A	APP CRS 213°	Rwy Idg 5002 TDZE 1194 Apt Elev 1194
--	------------------------	---

RNAV (GPS) RWY 21
WHEELING OHIO COUNTY (HILG)

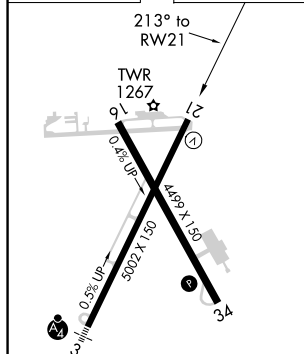
T For uncompensated Baro-VNAV systems, procedure NA below -17°C (2°F) or above 54°C (130°F). Rwy 21 helicopter visibility reduction below $\frac{3}{4}$ SM NA. DME/DME RNP-0.3 NA.

MISSED APPROACH: Climb to 1700 then climbing right turn to 3100 direct AIR VOR/DME and hold.

ASOS 127.375	PITTSBURGH APP CON 125.275 285.575	WHEELING TOWER * 118.1(CTAF) 0257.8	GND CON 121.75	CLNC DEL 125.275 (when twr closed)	UNICOM 122.95
------------------------	--	---	--------------------------	---	-------------------------



ELEV 1194		TDZE 1194
-----------	--	-----------



HIRL Rwy 3-21 **L**
MIRL Rwy 16-34 **L**
REIL Rwy 21 and 34 **L**

The diagram illustrates a holding pattern for RWY 21 at the ACETE VOR station. The pattern consists of two parallel legs separated by 4 NM. The inbound leg is oriented 033° (Magnetic) and the outbound leg is oriented 213° (Magnetic). The altitude is 3000 feet. A dashed line indicates the approach path from RWY 21, which is 1.5 NM from the start of the holding pattern. The diagram also shows the BEKSE VOR station and its associated holding pattern.

CATEGORY	A	B	C	D
LPV DA		1444-1	250 (300-1)	
LNAV/VNAV DA		1653-1½	459 (500-1½)	
LNAV MDA	1700-1	506 (600-1)	1700-1¾	506 (600-1¾)
C CIRCLING	1720-1 526 (600-1)	1740-1 546 (600-1)	1900-2 706 (800-2)	1920-2¼ 726 (800-2¼)