

LOC I-PKB	APP CRS	Rwy Idg	6780
110.7	027°	TDZE	830
		Apt Elev	859

ILS or LOC RWY 3

MID-OHIO VALLEY RGNL (PKB)

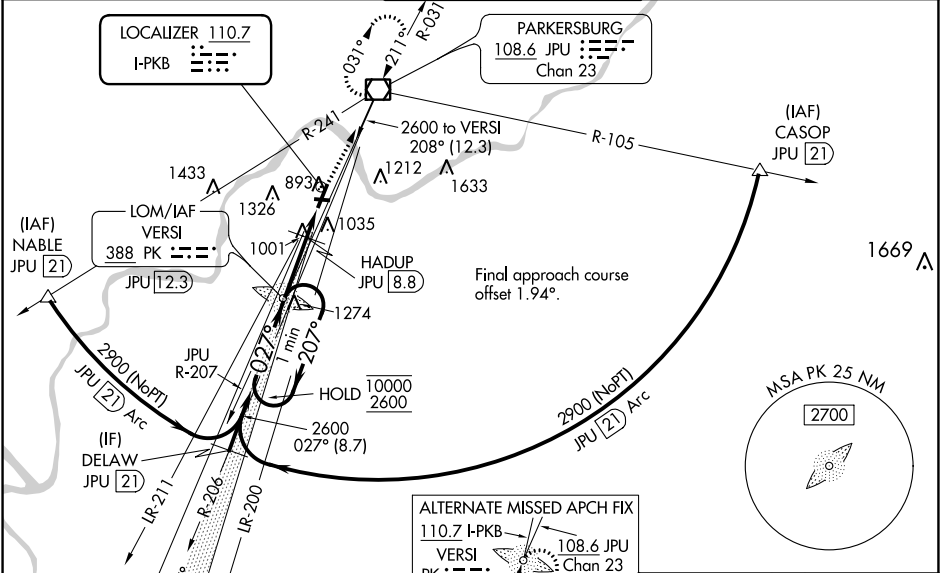
NA

When local altimeter setting not received, use Athens/Albany altimeter setting and increase all DA/MDA 100 feet; increase S-ILS 3 all Cats visibility to RVR 5000, S-LOC 3 Cats C/D to 1½ SM, S-LOC 3 HADUP fix minimums (DME required) Cats C/D to RVR 5500, and Circling Cat C ½ SM. For inop ALS, increase S-LOC 3 Cat A/B and S-LOC 3 HADUP fix minimums (DME required) Cat A/B visibility to RVR 5500. For inop ALS when using Athens/Albany altimeter setting, increase S-ILS 3 all Cats visibility to 1½ SM and S-LOC 3 all Cats and S-LOC 3 HADUP fix minimums (DME required) Cat A/B visibility to RVR 5500.

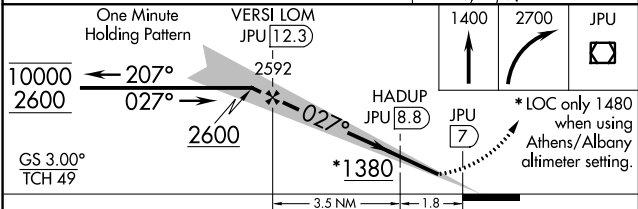
MALSR

MISSED APPROACH:  
Climb to 1400 then climbing right turn to 2700 direct JPU VOR/DME and hold.

ATIS	INDIANAPOLIS CENTER	PARKERSBURG TOWER ★	GND CON	UNICOM
124.35	125.55 398.9	123.7 (CTAF) 257.8	121.7	122.95



ELEV 859	TDZE 830
HIRL Rwy 3-21 and 10-28	REIL Rwy 10, 21
	REIL Rwy 28



CATEGORY	A	B	C	D
S-ILS 3	1201/40 371 (400-¾)			
S-LOC 3	1380/40	550 (600-¾)	1380/60	550 (600-1¼)
CIRCLING	1380-1	521 (600-1)	1380-1½ 521 (600-1½)	1420-2 561 (600-2)
HADUP FIX MINIMUMS (DME REQUIRED)				
S-LOC 3	1260/40 430 (500-¾)			
CIRCLING	1320-1 461 (500-1)	1340-1 481 (500-1)	1360-1½ 501 (600-1½)	1420-2 561 (600-2)

