

WAAS CH 45712 W13A	APP CRS 133°	Rwy Idg 6350 TDZE 344 Apt Elev 344
--	------------------------	---

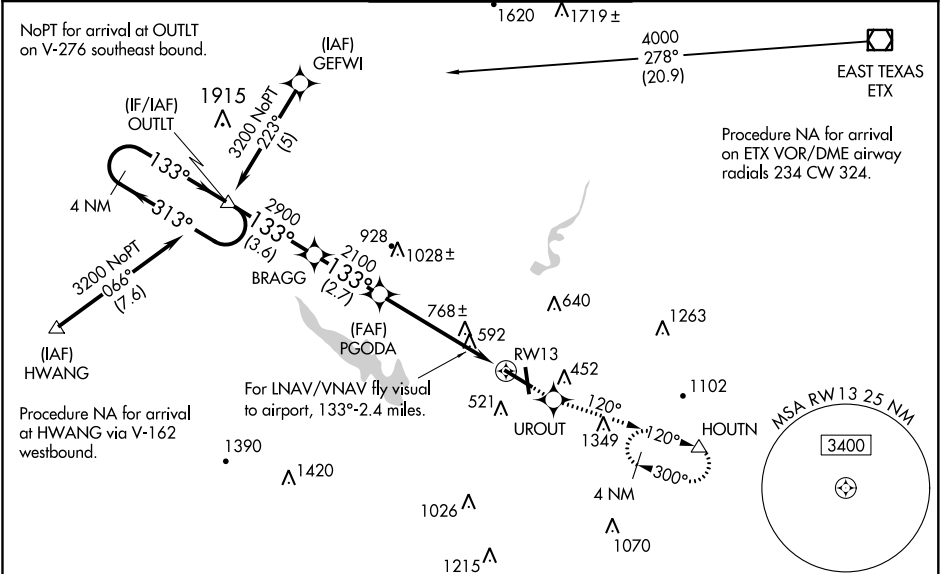
RNAV (GPS) RWY 13

READING RGNL/CARL A SPAATZ FIELD (RDG)

▼ Night landing: Rwy 18, 31 NA. For uncompensated Baro-VNAV systems, LNAV/VNAV NA below -15°C (5°F) or above 48°C (115°F). DME/DME RNP-0.3 NA. Helicopter visibility reduction below ¾ SM NA. VDP NA when using Harrisburg Intl altimeter setting. LNAV/VNAV NA when using Harrisburg altimeter setting. When local altimeter setting not received, use Harrisburg Intl altimeter setting and increase all DA 93 feet and visibility ½ mile all Cats and increase all MDA 100 feet, and increase LNAV Cat B/C/D and Circling Cat B/C visibility ¼ mile, and Circling Cat D visibility ½ mile.

MISSED APPROACH: Climb to 3000 direct UROUT and via 120° track to HOUTN and hold, continue climb-in-hold to 3000.

ATIS 127.1	READING APP CON ★ 125.15 257.9	READING TOWER ★ 119.9 (CTAF) 0 288.3	GND CON 121.9	UNICOM 122.95
----------------------	--	--	-------------------------	-------------------------



4 NM Holding Pattern		3000 UROUT 120° HOUTN		ELEV 344 D TDZE 344	
OUTLT		BRAGG		PGODA	
3200 ← 313° 133° → 2900		2100		2100	
GP 3.00° TCH 45		3.6 NM		2.7 NM	
CATEGORY		A		B	
LPV DA		926-2		582 (600-2)	
LNAV/VNAV DA		1170-2 826 (900-2)		1170-2 826 (900-2 ¾)	
LNAV MDA		1040-1 696 (700-1)		1040-2 696 (700-2 ¼)	
CIRCLING		1040-1 696 (700-1)		1040-2 1140-2 796 (800-2 ½)	

For LNAV/VNAV fly visual to airport, 133°-2.4 miles.

* 2 NM to RWY 13

* LNAV only

RWY 13

REIL Rwy 13 and 31

HIRL Rlys 13-31 and 18-36