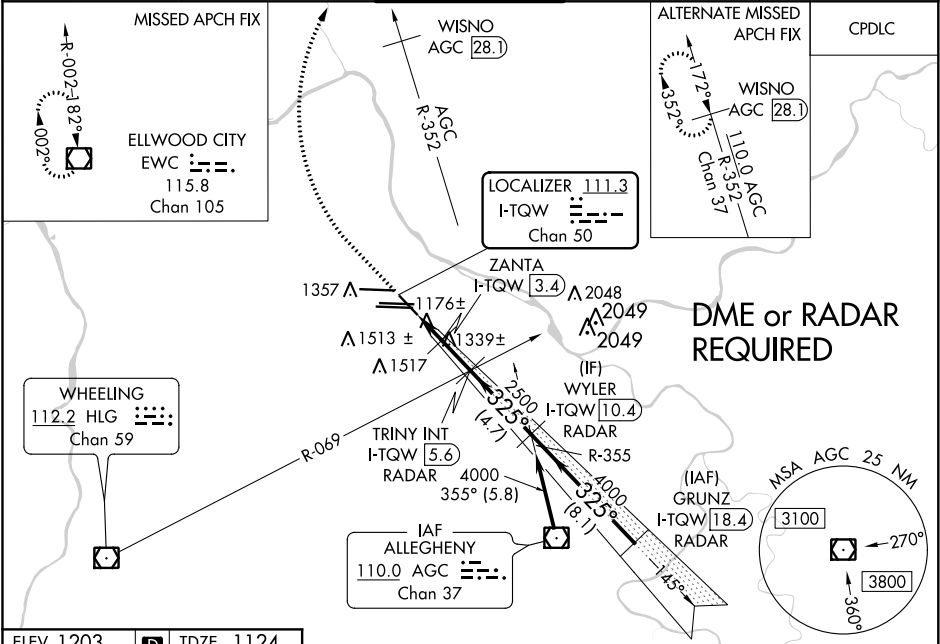


LOC/DME I-TQW <b>111.3</b> Chan <b>50</b>	APP CRS <b>325°</b>	Rwy ldg <b>7466</b> TDZE <b>1124</b> Apt Elev <b>1203</b>
---	------------------------	---

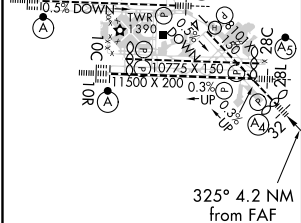
ILS or LOC RWY 32  
PITTSBURGH INTL (PIT)

▼ DME or RADAR required. Inop table does not apply to S-ILS 32. For inop ALS, increase S-LOC 32 Cat E visibility to 1 ¾ SM and ZANTA fix minimums S-LOC 32 Cat E visibility to RVR 6000.	MALS 	MISSED APPROACH: Climb to 1800 then climbing right turn to 4000 direct EWC VOR/DME and hold.
--	----------	--

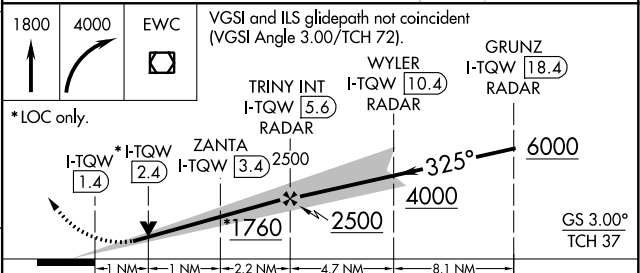
D-ATIS ARR <b>127.25</b> DEP <b>135.9</b>	PITTSBURGH APP CON <b>123.95 360.8</b>	PITTSBURGH TOWER <b>128.3 291.7</b>	GND CON SOUTH <b>121.9 348.6</b> NORTH <b>127.8 348.6</b>	CLNC DEL <b>126.75 353.7</b>
---	---	--	---	---------------------------------



ELEV 1203	<b>D</b>	TDZE 1124
-----------	----------	-----------



REIL Rwy 10C HIRL all Rwys TDZ/CL Rwys 10L, 10R, 28L, 28R, 28C, and 32
FAF to MAP 4.2 NM
Knots 60 90 120 150 180 Min:Sec 4:12 2:48 2:06 1:41 1:24



CATEGORY	A	B	C	D	E
S-ILS 32	1324/40 200 (200-¾)				
S-LOC 32	1760/40	636 (600-¾)	1760-1½	636 (600-1½)	
CIRCLING	1760-1	557 (600-1)	1880-2 677 (700-2)	1880-2¼ 677 (700-2¼)	1880-2½ 677 (700-2½)
ZANTA FIX MINIMUMS (DME REQUIRED)					
S-LOC 32	1520/40	396 (400-¾)	1520/45	396 (400-¾)	
CIRCLING	1700-1	497 (500-1)	1880-2 677 (700-2)	1880-2¼ 677 (700-2¼)	1880-2½ 677 (700-2½)

NE-4, 03 DEC 2020 to 31 DEC 2020

NE-4, 03 DEC 2020 to 31 DEC 2020