
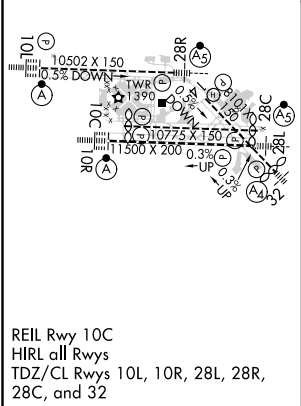
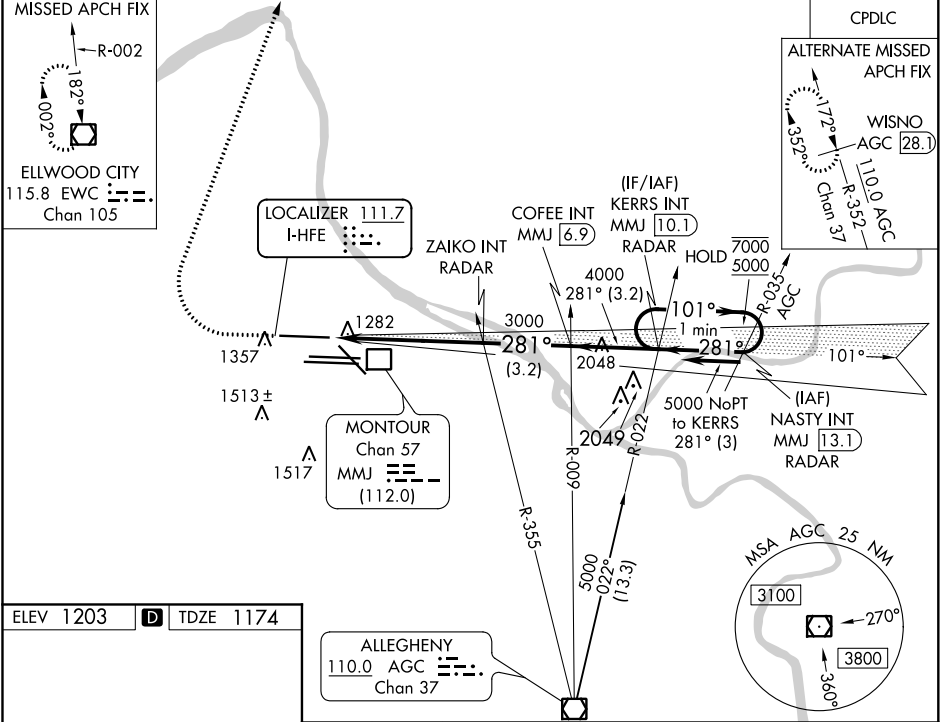




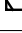
LOC I-HFE	APP CRS	Rwy Idg	10102
111.7	281°	TDZE	1174
		Apt Elev	1203

ILS RWY 28R (SA CAT I & II)
PITTSBURGH INTL (PIT)

From NASTY: Radar required for procedure entry.	MALSR 	MISSED APPROACH: Climb to 1800 then climbing right turn to 5000 direct EWC VOR/DME and hold.
-------------------------------------------------	--------------------------------------------------------------------------------------------	----------------------------------------------------------------------------------------------

D-ATIS ARR 127.25 DEP 135.9	PITTSBURGH APP CON 123.95 360.8	PITTSBURGH TOWER 128.3 291.7	GND CON SOUTH 121.9 348.6 NORTH 127.8 348.6	CLNC DEL 126.75 353.7
-----------------------------------	------------------------------------	---------------------------------	---------------------------------------------------	--------------------------



1800	5000	EWC	VGSI and ILS glidepath not coincident (VGSI Angle 3.00/TCH 71).
			KERRS INT MMJ 10.1 ZAICO INT RADAR COFFEE INT MMJ 6.9 One Minute Holding Pattern
3000			101° → 7000 ← 281° 5000
3000			GS 3.00° TCH 55
5.6 NM 3.2 NM 3.2 NM			
CATEGORY	A	B	C D
S-ILS 28R	SA CAT I RA 192/14 150 DA 1324		
S-ILS 28R	SA CAT II RA 116/12 100 DA 1274		
SA CATEGORY I & II ILS - SPECIAL AIRCREW & AIRCRAFT CERTIFICATION REQUIRED			

NE-4, 03 DEC 2020 to 31 DEC 2020

NE-4, 03 DEC 2020 to 31 DEC 2020