

WAAS CH 66017 W30A	APP CRS 298°	Rwy Idg TDZE Apt Elev	6516 828 828
--	------------------------	-----------------------------	---

RNAV (GPS) RWY 30

TRI-STATE/MILTON J FERGUSON FIELD (HTS)

RNP APCH.

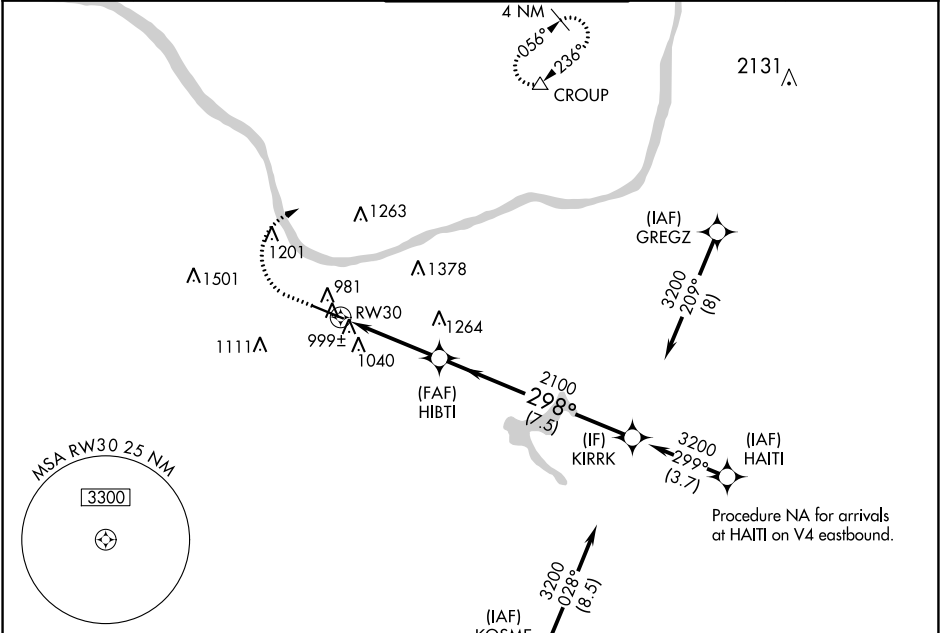
⚠

ASR

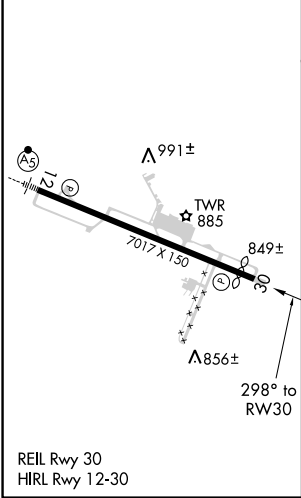
For uncompensated Baro-VNAV systems, LNAV/VNAV NA below -18°C or above 54°C.

MISSED APPROACH: Climb to 1700 then climbing right turn to 3000 direct CROUP and hold.

ATIS 125.2	HUNTINGTON APP CON 119.75 270.1	HUNTINGTON TOWER 118.5 270.1	GND CON 121.9	CLNC DEL 118.05
----------------------	---	--	-------------------------	---------------------------



ELEV 828	D	TDZE 828
----------	----------	----------



	1700	3000	CROUP	
	↑	↷	△	
	*LNAV only.			
	* 1.2 NM to RWY 30			
	RWY 30			
	1.2 2.6 NM 7.5 NM			
	HIBTI KIRRK			
	2100 3200			
	298°			
	GP 3.00°			
	TCH 50			
CATEGORY	A	B	C	D
LPV DA	1028-3/4 200 (200-3/4)			
LNAV/VNAV DA	1180-1 352 (400-1)			
LNAV MDA	1260-1	432 (500-1)	1260-1 1/4	432 (500-1 1/4)
C CIRCLING	1320-1 492 (500-1)	1380-1 552 (600-1)	1520-2 692 (700-2)	1820-3 992 (1000-3)

NE-4, 03 DEC 2020 to 31 DEC 2020

NE-4, 03 DEC 2020 to 31 DEC 2020