

WAAS CH 45699 W12A	APP CRS 118°	Rwy Idg 6516 TDZE 828 Apt Elev 828
----------------------------------------	------------------------	---------------------------------------------------------------

RNAV (GPS) RWY 12

TRI-STATE/MILTON J FERGUSON FIELD (HTS)

RNP APCH.

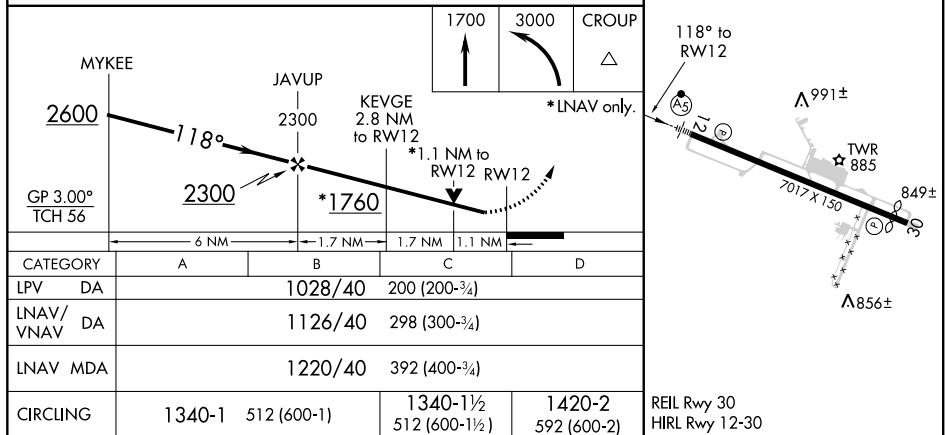
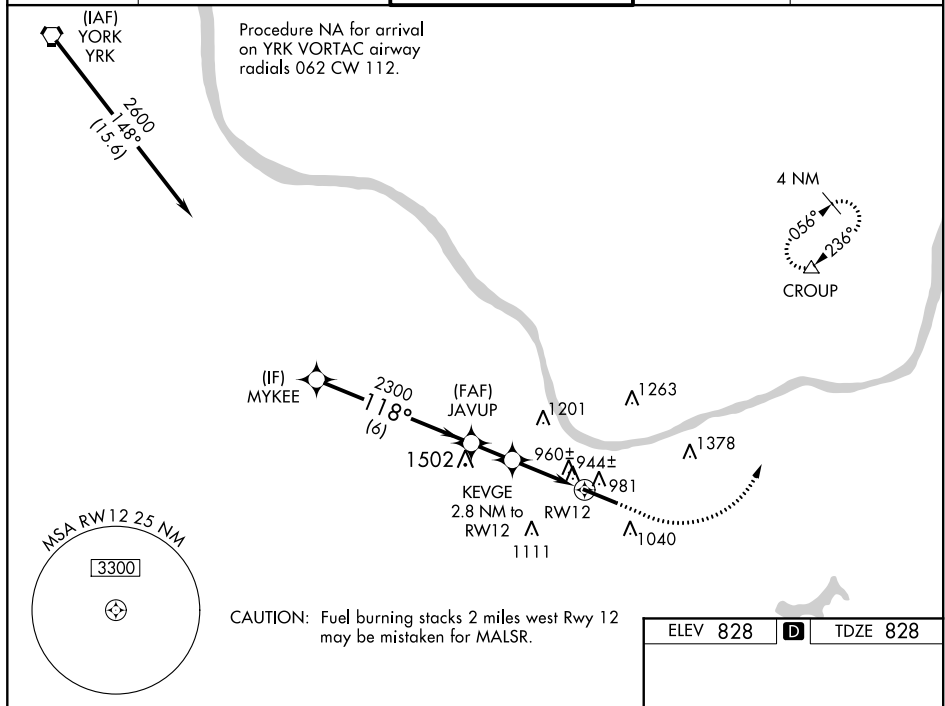
T For inoperative ALS, increase LNAV/VNAV all Cats visibility to RVR 4500, LNAV Cat A/B to RVR 5500, Cat C/D to RVR 6000. For uncompensated Baro-VNAV systems, LNAV/VNAV NA below 16°C or above 38°C. Rwy 12 helicopter visibility reduction below $\frac{3}{4}$ SM NA.

MALSR



MISSED APPROACH:
Climb to 1700 then
climbing left turn to 3000
direct CROUP and hold

ATIS 125.2	HUNTINGTON APP CON 119.75 270.1	HUNTINGTON TOWER 118.5 270.1	GND CON 121.9	CLNC DEL 118.05
----------------------	-------------------------------------------	----------------------------------------	-------------------------	---------------------------



HUNTINGTON, WEST VIRGINIA

Amdt 3B 20JUN19

TRI-STATE/MILTON J FERGUSON FIELD (HTS)

38°22'N-82°34'W

RNAV (GPS) RWY 12

NE-4, 03 DEC 2020 to 31 DEC 2020

NE-4, 03 DEC 2020 to 31 DEC 2020