

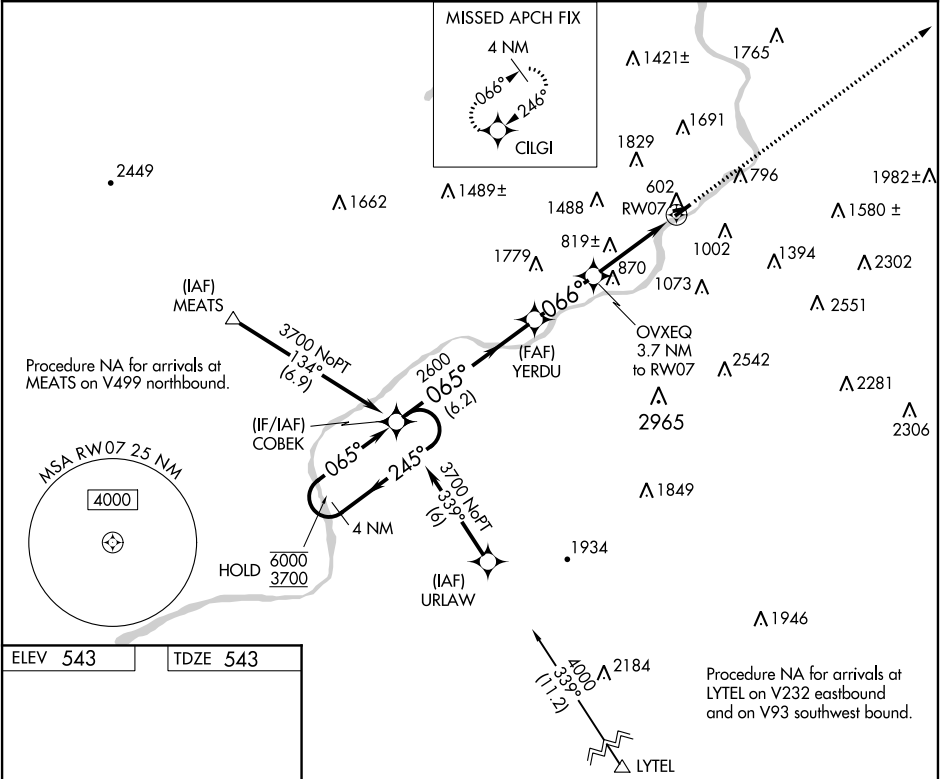
WAAS CH 86624 W07A	APP CRS 066°	Rwy Idg TDZE 543 Apt Elev 543	3375 543 543
--	------------------------	---	---

RNAV (GPS) RWY 7

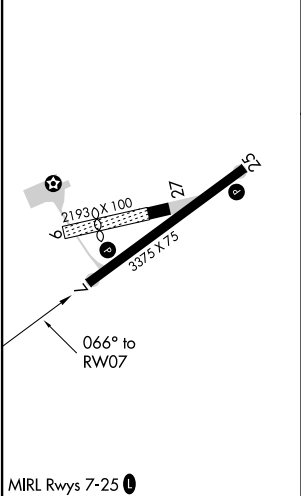
WILKES-BARRE WYOMING VALLEY (WBW)

RNP APCH.	MISSED APCH FIX	MISSED APPROACH: Climb to 3800 direct CIGLI and hold.
NA	Rwy 7 helicopter visibility reduction below 1 SM NA. Use Wilkes-Barre/Scranton altimeter setting. Circling NA NW of Rwy 7-25. Straight-in and Circling Rwy 7 NA at night.	

AVP ASOS 111.6	WILKES-BARRE APP CON 126.3 256.7	UNICOM 122.8 (CTAF) 0
--------------------------	--	---------------------------------



ELEV 543	TDZE 543
-----------------	-----------------



4 NM Holding Pattern				COBEK	VGSI and descent angles not coincident (VGSI Angle 4.00/TCH 40).	3800	CIGLI
6000 ← 245°				065° →	065°	3.00° TCH 40	OVXEQ 3.7 NM to RW07
3700				2600	1760		RW07
				6.2 NM	2.6 NM	3.7 NM	
CATEGORY	A	B	C	D			
LP MDA	1160-1	617 (700-1)	NA				
LNAV MDA	1300-1 757 (800-1)	1300-1¼ 757 (800-1¼)	NA				
CIRCLING	1300-1 757 (800-1)	1300-1¼ 757 (800-1¼)	NA				