

WAAS
CH **45824**
W25A

APP CRS
246°

Rwy Idg
TDZE **543**
Apt Elev **543**

3375

543

543

RNAV (GPS) RWY 25

WILKES-BARRE WYOMING VALLEY (WBW)

RNP APCH.

⚠

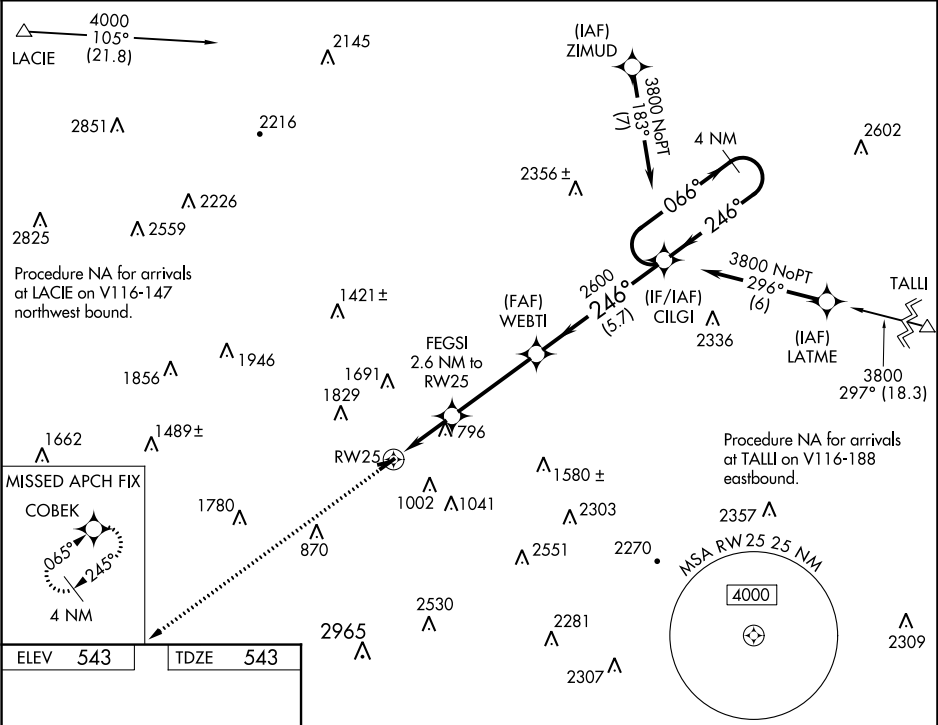
NA

Circling NA to Rwy 9 and 27. Rwy 25 helicopter visibility reduction below $\frac{3}{4}$ SM NA.
Baro-VNAV NA. Use Wilkes-Barre/Scranton altimeter setting. Circling Rwy 7 NA at night.
Circling NA NW of Rwy 7-25.

MISSED APPROACH:

Climb to 3700 direct COBEK and hold.

AVP ASOS 111.6	WILKES-BARRE APP CON 126.3 256.7	UNICOM 122.8 (CTAF) 0
--------------------------	--	---------------------------------



ELEV **543**

TDZE **543**

3700

COBEK

VGSI and RNAV glidepath not coincident (VGSI Angle 3.75/TCH 40).

4 NM Holding Pattern

246° to RW25

246°

066°

3800

21930 X 100

3375 X 75

***LNAV only**

RW25

FEGSI 2.6 NM to RW25

WEBTI 2600

CILGI

1400*

2600

3800

2.6 NM

3.7 NM

5.7 NM

GP 3.00° TCH 40

CATEGORY	A	B	C	D
LPV DA	1063-1½	520 (600-1½)		NA
LNAV/VNAV DA	1184-2¼	641 (700-2¼)		NA
LNAV MDA	1240-1	697 (700-1)		NA
CIRCLING	1280-1 737 (800-1)	1380-1¼ 837 (900-1¼)		NA