

| | | |
|--|------------------------|---|
| WAAS CH 40023 W09A | APP CRS 087° | Rwy Idg TDZE 21 Apt Elev 36 |
|--|------------------------|---|

RNAV (GPS) Y RWY 9R

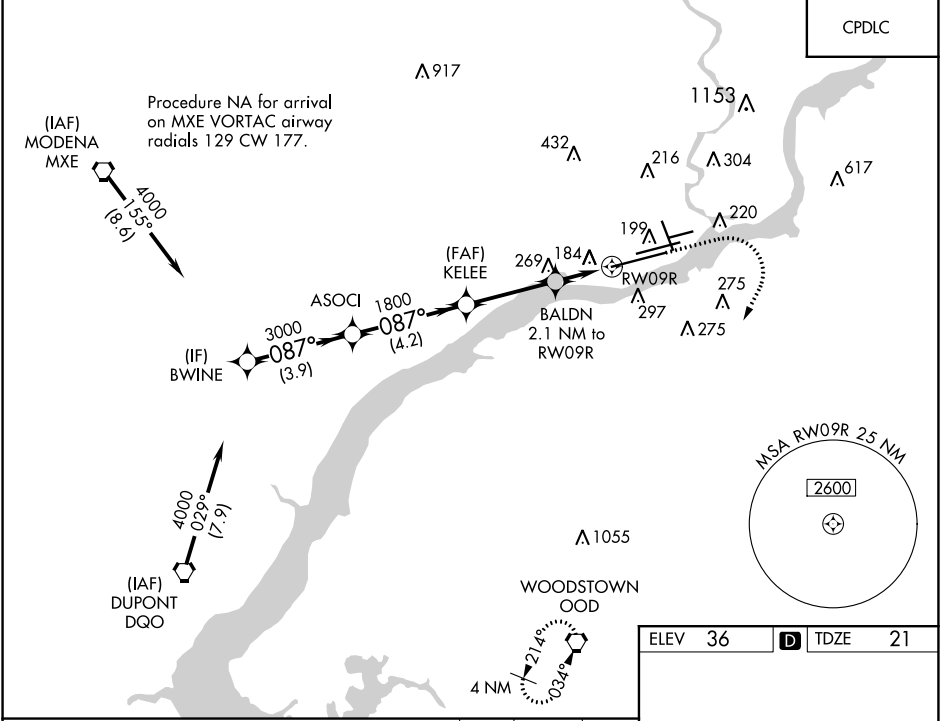
PHILADELPHIA INTL (PHL)

For uncompensated Baro-VNAV systems, LNAV/VNAV NA below -12°C (11°F) or above 54°C (130°F). DME/DME RNP-0.3 NA.
For inop ALS, increase LNAV/VNAV visibility all Cats to RVR 5000 and LNAV Cats C/D visibility to RVR 6000.

ALSIF-2

MISSED APPROACH: Climb to 1500 then climbing right turn to 3000 direct OOD VORTAC and hold.

| | | | | |
|--|--|---|-------------------------------|---------------------------------|
| D-ATIS ARR 133.4 DEP 135.925 | PHILADELPHIA APP CON 124.35 319.15 | PHILADELPHIA TOWER 118.5 327.05 (Rwys 9L/27R, 8/26 and 17/35) 135.1 327.05 (Rwy 9R/27L) | GND CON 121.9 348.6 | CLNC DEL 118.85 348.6 |
|--|--|---|-------------------------------|---------------------------------|



| | | | | | | |
|--------------|--|--|--|--------------|-------------------|-----|
| BWINE | | VGSI and RNAV glidepath not coincident (VGSI Angle 3.00/TCH 72). | | 1500 | 3000 | OOD |
| | | ASOCI | | | | |
| 4000 | | 087° | | 1800 | *LNAV only. | |
| 3000 | | | | 1800 | *1.1 NM to RWY09R | |
| GP 3.00° | | TCH 58 | | *740 | RWY09R | |
| 3.9 NM | | 4.2 NM | | 3.3 NM | 1 NM | |
| CATEGORY | | A | | B | | D |
| LPV DA | | 221/18 | | 200 (200-½) | | |
| LNAV/VNAV DA | | 346/30 | | 325 (400-¾) | | |
| LNAV MDA | | 440/24 | | 419 (500-½) | | |
| | | 440/40 | | 419 (500-¾) | | |
| CIRCLING | | 540-1 | | 640-1 | | |
| | | 504 (600-1) | | 604 (700-1) | | |
| | | 640-1¾ | | 640 (700-1¾) | | |
| | | 720-2¼ | | 684 (700-2¼) | | |

ELEV 36

TDZE 21