

BOJID TWO ARRIVAL (RNAV)

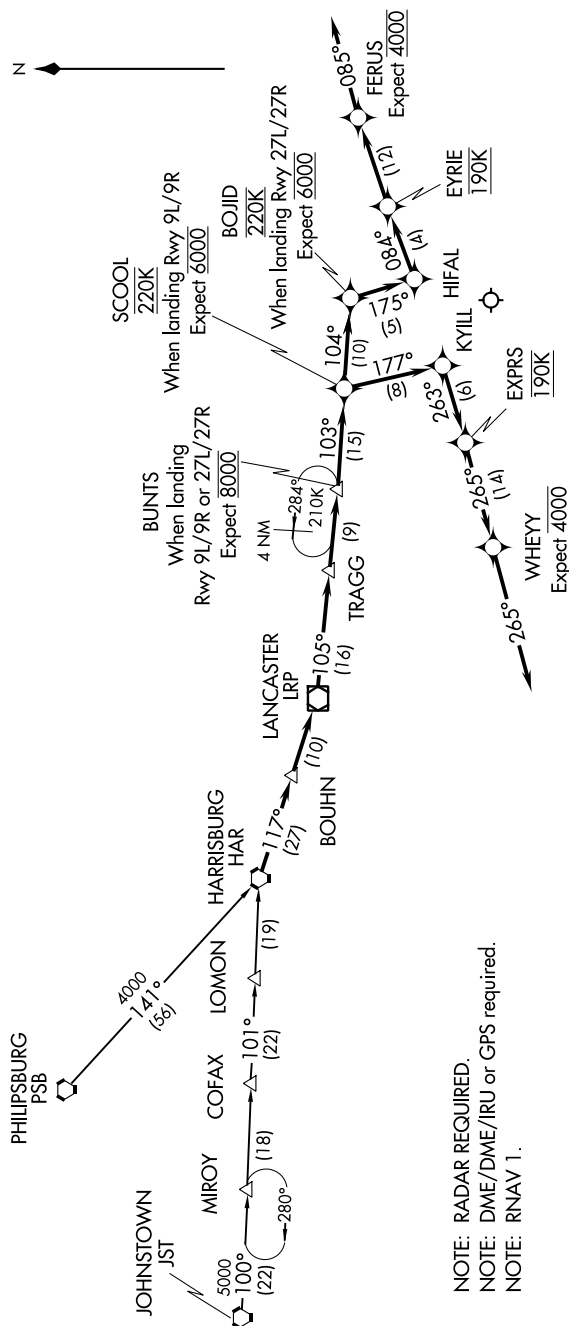
JOHNSTOWN TRANSITION (JST.BOJD2):

From HAR VORTAC, thence BOUHN, thence LRP VOR/DME, thence TRAGG, thence BUNTS,

WHEN PHILADELPHIA INTL IS LANDING RWYS 27L/27R, thence SCOO, thence BOJID, thence HIFAL, thence EYRIE, thence FERUS, depart FERUS heading 085°, expect RADAR vectors to final approach. WHEN PHILADELPHIA INTL IS LANDING RWYS 9L/9R, thence SCOO, thence KYLL, thence EXPRS, thence WHEYY, depart WHEYY heading 265°. Expect RADAR vectors to final approach.

D-ATIS ARR 133.4
PHILADELPHIA APP CON
124.35 319.15
PHILADELPHIA FINAL CONTROL
125.4 263.125
PHILADELPHIA TOWER
118.5 327.05
(Rwys 9L/27R, 8/26 and 17/35)
135.1 327.05
(Rwy 9R/27L)
GND CON
121.9 348.6
CLNC DEL
118.85 348.6

NOTE: RADAR REQUIRED.
NOTE: DME/DME/IRU or GPS required.
NOTE: RNAV 1.



NOTE: Chart not to scale.

NE-4, 03 DEC 2020 to 31 DEC 2020

BOJID TWO ARRIVAL (RNAV)
(BOJID.BOJID2) 15SEP16PHILADELPHIA, PENNSYLVANIA
PHILADELPHIA INTL (PHL)