

WAAS	APP CRS	Rwy Idg	8129
CH 78013	308°	TDZE	308
W31A		Apt Elev	310

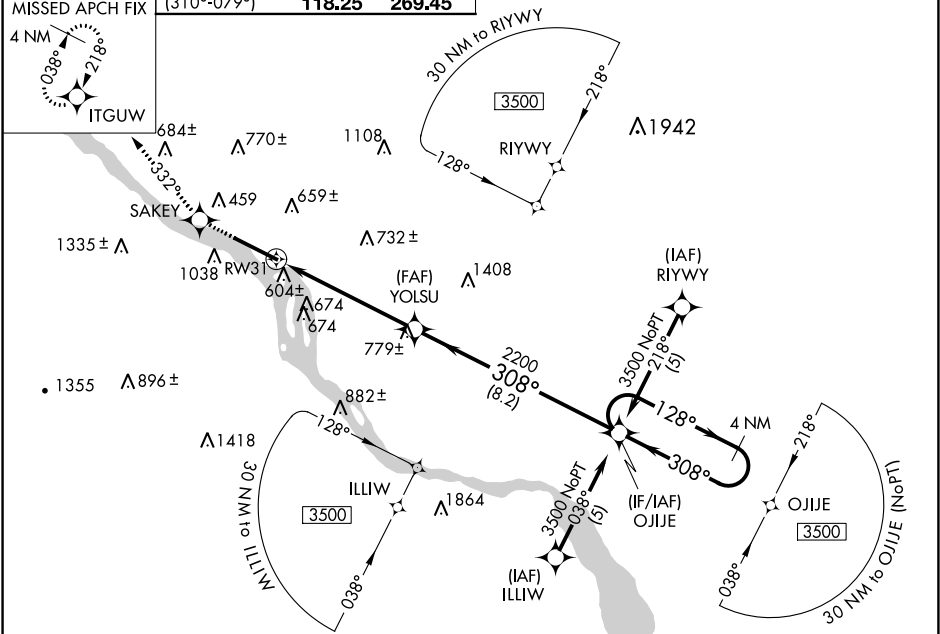
RNAV (GPS) RWY 31

HARRISBURG INTL (MDT)

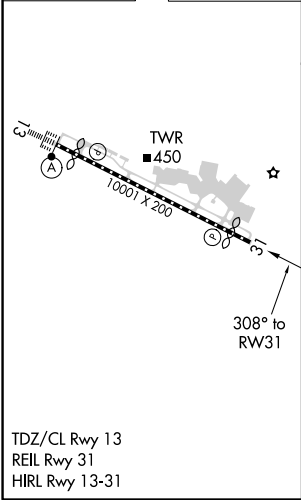
Circling NA south of Rwy 13-31. For uncompensated Baro-VNAV systems, LNAV/VNAV NA below -15°C (5°F) or above 48°C (118°F). DME/DME RNP-0.3 NA.

MISSED APPROACH: Climb to 3500 direct SAKEY and via track 332° to ITGUW and hold.

ATIS 118.8	HARRISBURG APP CON (080°-179°) 126.45 281.525 (180°-309°) 124.1 273.525 (310°-079°) 118.25 269.45	HARRISBURG INTL TOWER 124.8 269.35	GND CON 121.7 348.6
---------------	--	---------------------------------------	------------------------



ELEV 310	D	TDZE 308
----------	---	----------



3500

SAKEY

tr 332°

ITGUW

VGSI and RNAV glidepath not coincident (VGSI Angle 3.00/TCH 51).

4 NM Holding Pattern

OJJE

128°

3500

308°

GP 3.00° TCH 51

YOLSU

2200

5.7 NM

8.2 NM

RW31

CATEGORY	A	B	C	D
LPV DA		558/50	250 (300-1)	
LNAV/VNAV DA		921-2¼	613 (700-2¼)	
LNAV MDA	1100/50 792 (800-1)	1100/60 792 (800-1¼)	1100-2¼ 792 (800-2¼)	1100-2½ 792 (800-2½)
CIRCLING	1100-1 790 (800-1)	1100-1¼ 790 (800-1¼)	1100-2¼ 790 (800-2¼)	1100-2½ 790 (800-2½)