

LOC FMDT 110.9	APP CRS 128°	Rwy Idg TDZE Apt Elev 8070 308 310
--------------------------	------------------------	--

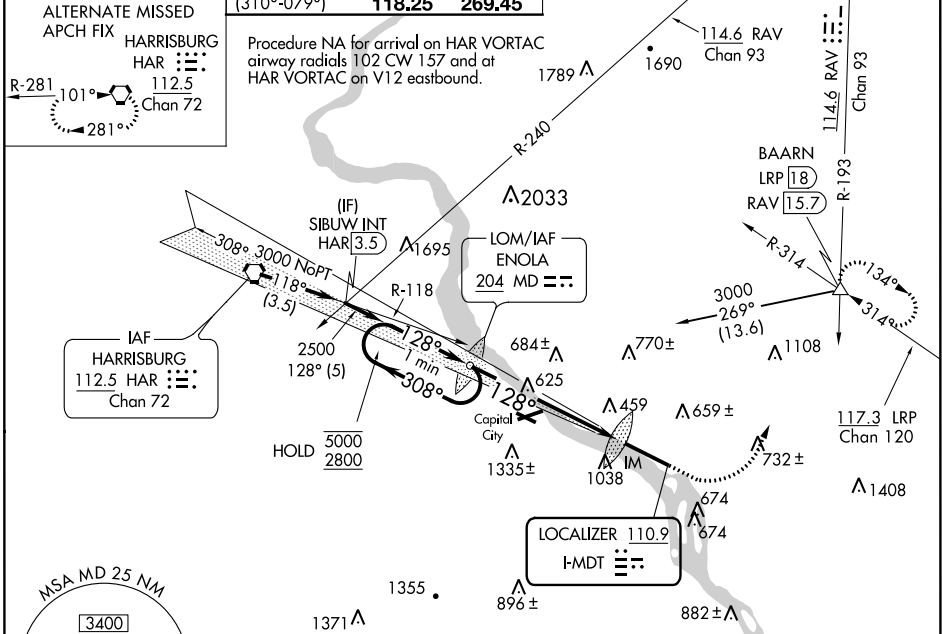
ILS or LOC RWY 13
HARRISBURG INTL (MDT)

17°C Circling NA south of Rwy 13-31.

ALSF-2

MISSED APPROACH: Climb to 900 then climbing left turn to 3000 on heading 060° and RAV VORTAC R-193 to BAARN INT/LRP 18 DME and hold.

ATIS 118.8	HARRISBURG APP CON (080°-179°) 126.45 281.525 (180°-309°) 124.1 273.525 (310°-079°) 118.25 269.45	HARRISBURG INTL TOWER 124.8 269.35	GND CON 121.7 348.6
----------------------	---	--	-------------------------------



One Minute Holding Pattern

ENOLA LOM 2450

900 3000 hdg 060° RAV R-193 BAARN

VGSI and ILS glidepath not coincident (VGSI Angle 3.00/TCH 75).

5000 ← 308° 2800 128° → 2500

GS 3.00° TCH 55

6.3 NM 0.1

ELEV 310 TDZE 308

128° 6.4 NM from FAF

TWR 450

10001 X 200

CATEGORY	A	B	C	D
S-ILS 13	508/18 200 (200-½)			
S-LOC 13	900/24	592 (600-½)	900-1¼	592 (600-1¼)
CIRCLING	900-1	590 (600-1)	940-1¾ 630 (700-1¾)	1000-2 690 (700-2)

TDZ/CL Rwy 13

REIL Rwy 31

HIRL Rwy 13-31

FAF to MAP 6.4 NM

Knots	60	90	120	150	180
Min:Sec	6:24	4:16	3:12	2:34	2:08

NE-4, 03 DEC 2020 to 31 DEC 2020

NE-4, 03 DEC 2020 to 31 DEC 2020