


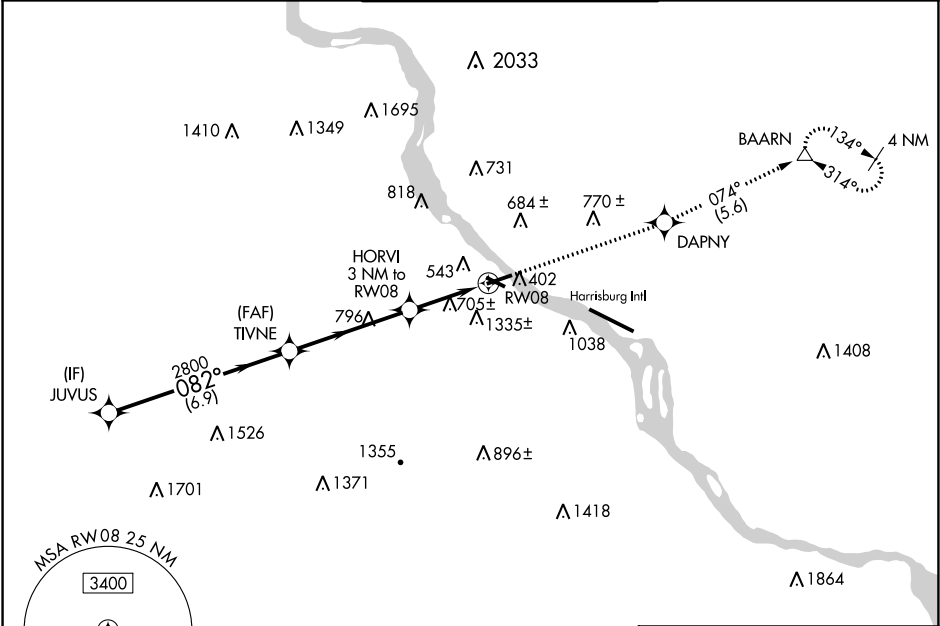
WAAS CH 70610 W08A	APP CRS 082°	Rwy Idg TDZE 342 Apt Elev 347
--	------------------------	---

RNAV (GPS) RWY 8
CAPITAL CITY (CXY)

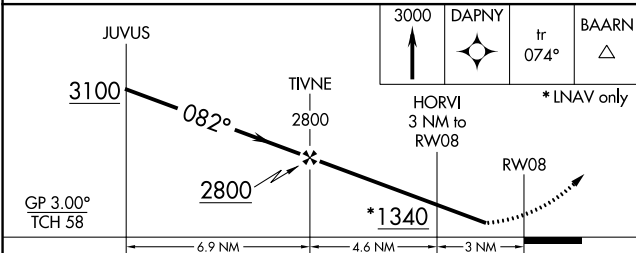
⚠ DME/DME RNP-0.3 NA. When local altimeter setting not received, use Harrisburg Intl altimeter setting. For inop MALSR, increase LPV all Cats visibility to 1½ mile and increase LNAV Cat C, D visibility to 1¾ mile. Helicopter visibility reduction below 1 SM NA. Procedure NA at night.

MALSR
 **MISSED APPROACH:** Climb to 3000 direct DAPNY and on track 074° to BAARN and hold.

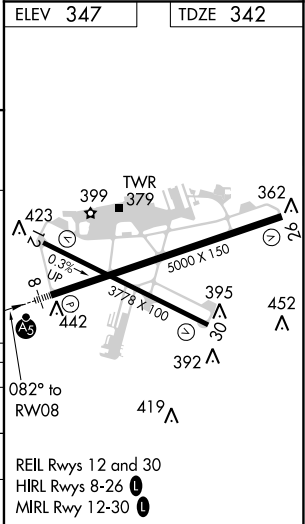
ATIS 134.95	HARRISBURG APP CON 124.1 273.525	CAPITAL CITY TOWER ★ 119.5 (CTAF) 257.8	GND CON 121.9	UNICOM 122.95
-----------------------	--	---	-------------------------	-------------------------



RADAR REQUIRED



CATEGORY	A	B	C	D
LPV DA	833-1¼		491 (500-1¼)	
LNAV MDA	960-1 625 (700-1)		960-1¾ 625 (700-1¾)	
CIRCLING	1200-1¼ 853 (900-1¼)		1700-3 1353 (1400-3)	



NE-4, 03 DEC 2020 to 31 DEC 2020

NE-4, 03 DEC 2020 to 31 DEC 2020