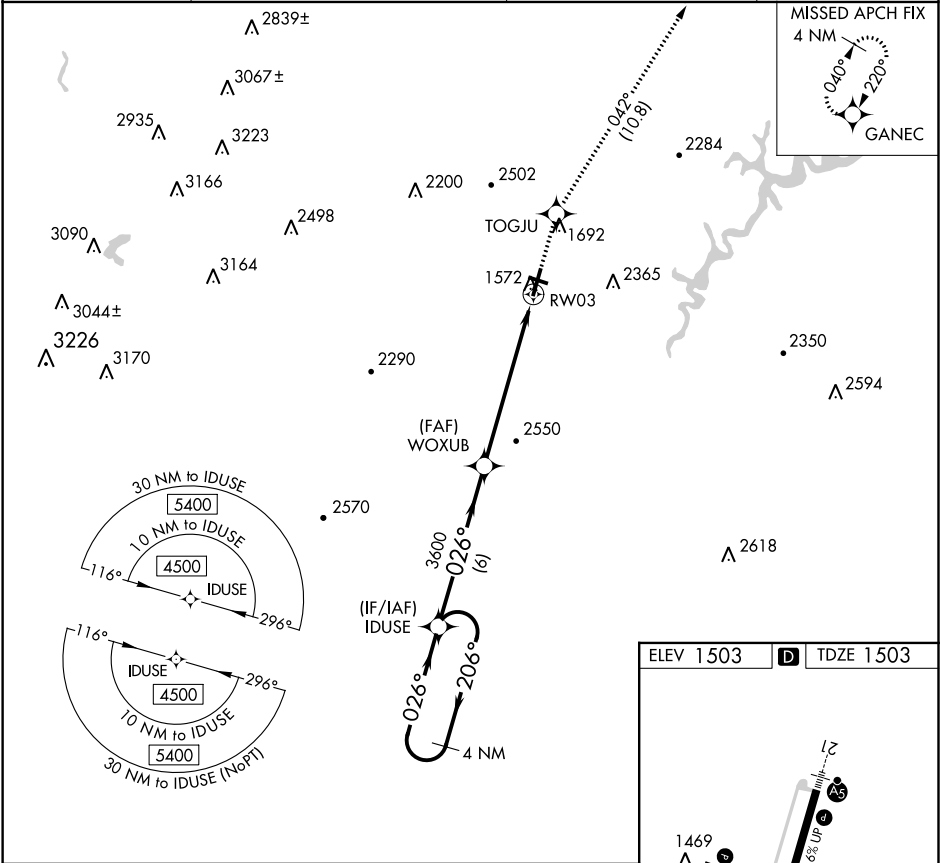


WAAS CH 82529 W03A	APP CRS 026°	Rwy Idg TDZE 1503 Apt Elev 1503
--	------------------------	---

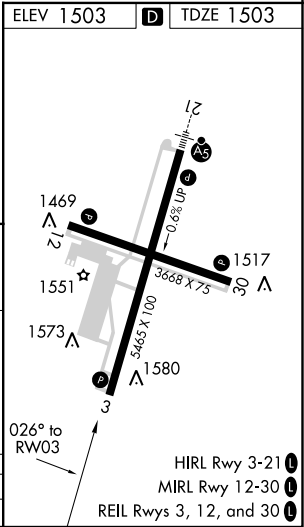
RNAV (GPS) Z RWY 3
ALTOONA-BLAIR COUNTY (A00)

▼ NA Rwy 3 helicopter visibility reduction below 3/4 SM NA. DME/DME RNP-0.3 NA. When local altimeter setting not received, use Bedford County altimeter setting and increase all DA 84 feet, and increase all visibilities 3/8 mile.	MISSED APPROACH: Climb to 5000 direct TOGJU and on track 042° to GANEC and hold, continue climb-in-hold to 5000.
--	--

ASOS 127.125	JOHNSTOWN APP CON ★ 121.2 299.2	CTAF 123.60	UNICOM 123.0
------------------------	---	-----------------------	------------------------



VGSI and RNAV glidepath not coincident (VGSI Angle 3.00/TCH 43).				5000	TOGJU	tr 042°	GANEC
4 NM Holding Pattern IDUSE				4500	WOXUB 3600	RW03	
GP 3.00° TCH 55				026°	026°	026°	
				6 NM	6.4 NM		
CATEGORY	A	B	C	D			
LPV DA	1828-1			325 (400-1)			



NE-4, 03 DEC 2020 to 31 DEC 2020

NE-4, 03 DEC 2020 to 31 DEC 2020