

WAAS CH 90105 W21A	APP CRS 206°	Rwy Idg TDZE 1486 Apt Elev 1503
--	------------------------	---

RNAV (GPS) RWY 21
ALTOONA-BLAIR COUNTY (A00)

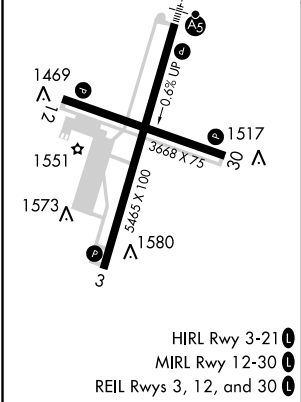
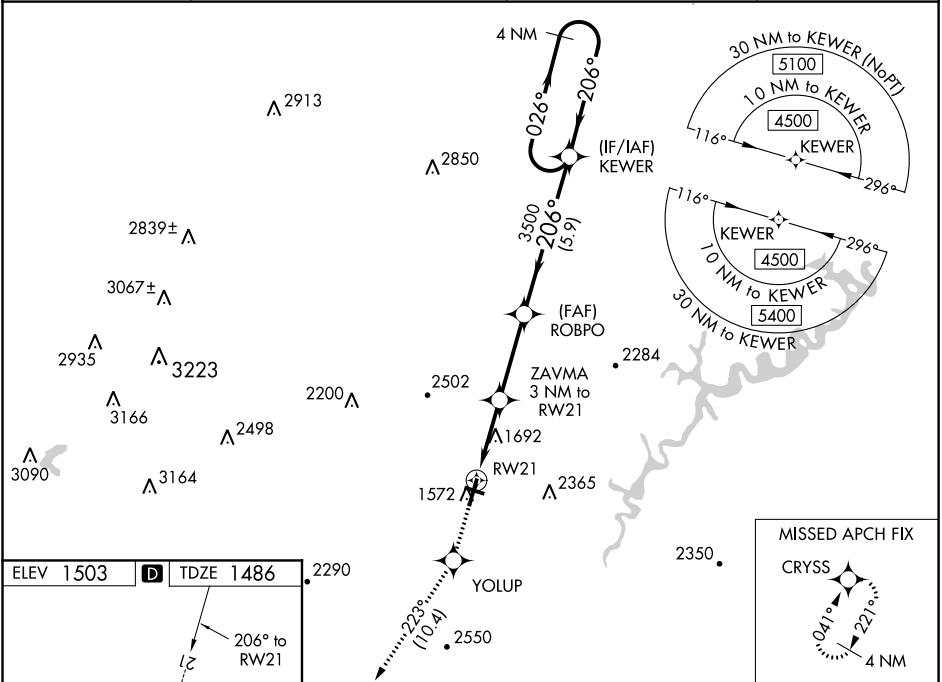
RNP APCH.

▼ Baro-VNAV NA when using Bedford County altimeter setting. For uncompensated Baro-VNAV systems, LNAV/VNAV NA below -17°C or above 54°C. For inoperative ALS, increase LPV visibility all Cats to 1½ SM. For inoperative ALS when using Bedford County altimeter setting, increase LPV and LNAV/VNAV all Cats visibility to 2 SM and increase LNAV Cats C/D visibility to 2 ½ SM. When local altimeter setting not received, use Bedford County altimeter setting; increase all DA 84 feet and all MDA 100 feet. Increase all LPV and LNAV/VNAV visibilities ¾ SM, LNAV Cats B, C and D and Circling Cat A ¼ SM. Circling Rwy 3, 12, 30 NA at night.

MALS

MISSED APPROACH:
Climb to 5000 direct YOLUP and on track 223° to CRYSS and hold, continue Climb-in-hold to 5000.

ASOS 127.125	JOHNSTOWN APP CON ★ 121.2 299.2	CTAF 123.60	UNICOM 123.0
------------------------	---	-----------------------	------------------------



5000	YOLUP	CRYSS	4 NM Holding Pattern
↑	tr 223°		
*LNAV only			
RWY 21 *2 NM to RWY 21			
ZAVMA 3 NM to RWY 21			
*2460			
3500			
2 NM 1 NM 3.2 NM 5.9 NM			
CATEGORY	A	B	C D
LPV DA	1977-1⅛ 491 (500-1⅛)		
LNAV/VNAV DA	1999-1¼ 513 (500-1¼)		
LNAV MDA	2160-½ 674 (700-½)	2160-½ 674 (700-½)	
CIRCLING	2240-1 737 (800-1)	2240-1¼ 737 (800-1¼)	2800-3 1297 (1300-3) 2840-3 1337 (1400-3)

NE-4, 03 DEC 2020 to 31 DEC 2020

NE-4, 03 DEC 2020 to 31 DEC 2020